



Cruise Guidebook





cruisingclub.org/event/sea-cortez-international-cruise

Table of Contents

- 1 From the Commodore**
- 2 From Your Cruise Chairs**
- 3 General Cruise Information**
 - 3.1 Cruising Guides & Navigation
 - 3.1 What to Bring
 - 3.2 Weather / Time Zone
 - 3.2 Language
 - 3.2 Currency / Credit Cards
 - 3.3 Provisioning
 - 3.4 Grocery Stores in Loreto
 - 3.4 Transportation
 - 3.5 Communications
 - 3.5 Medical / Emergencies
 - 3.6 Safety
 - 3.6 Berthing / Mooring / Anchoring
 - 3.6 Fuel/Water
 - 3.7 Supplies / Boatyards / Repairs
 - 3.7 Fishing
 - 3.7 Formalities

- 4 Suggested Itinerary**
 - 4.1 Friday, May 3 – Sunday, May 5
 - 4.2 Monday, May 6 – Wednesday, May 8
 - 4.3 Thursday, May 9 – Friday, May 10
 - 4.4 Saturday, May 11 – Sunday, May 12

- A.1 Appendix 1 – CCA Recommendations on Life Jackets and Tethers**
- A.2 Appendix 2 – Roster of Boats and Crew**
- A.3 Appendix 3 – Cruising Destination Chartlets**

Cover Photo: Caleta Partida panorama from the bow of Chez Nous. Gracias to Al & Jo Linda Garnier for their assistance and warm hospitality!



From the Commodore

Western Flyer was the 76' sardine boat chartered by John Steinbeck and his co-author and collaborator, marine biologist Edward Ricketts, for their 4,000-mile journey in 1940 from Monterey, California, around the Baja Peninsula and into the Sea of Cortez. Both authors were ready for a break after their respective masterpieces were published in 1939: *The Grapes of Wrath* and *Between Pacific Tides*. So, needing a rest, why not take 4,000-mile voyage on a boat?

The discovery of the spectacular biodiversity of sea life, and the indigenous peoples of this remote area, as well as stories of history, navigation, philosophy and life itself, formed the subject of two books about the journey; the first, published in 1941 by both Steinbeck and Ricketts, included a phyletic catalogue of the specimens collected, analyzed and preserved by Ricketts. The second, Steinbeck's the narrative portion of the book, is *The Log from the Sea of Cortez* published in 1951.

In the coming days we will cross parts of the Western Flyer's wake, beginning in Puerto Escondido near Loreto, and concluding in La Paz. A festive itinerary has been carefully planned by Cruise Co-Chairs Dan Gribble and Gary Davidson and many others. Please be sure to thank them for making this cruise happen!

Having never cruised these waters before, Elizabeth and I are very excited to be joining all of you for this adventure.

John (Jay) Gowell
Commodore



From Your Cruise Chairs

Not all those who wander are lost.
-JRR Tolkien

I first saw the Gulf of California on a family boat trip to San Felipe when I was just a boy. My dad had an 18-foot Glastron ski boat which we trailered over miles and miles of seemingly empty desert and launched there. The next two weeks we skied, and fished, and explored the coast just south of San Felipe. It was my first real adventure. Little did I know at the time that I was to later explore much of this incredible region known as the Sea of Cortez.

Most of those trips were excursions lasting a week or so over some holiday with family or during spring break with friends. We would meet Dad in the East Cape or La Paz or Loreto and have a week of fishing and snorkeling in between wandering local villages to scavenge provisions, drink beer, and eat Mexican food. I thought that was what Baja was all about. Fishing, tequila, and tacos. Of course, we often witnessed spectacular flaming sunrises, marveled at the star-studded canopy overhead at night, and rejoiced at the leaping rays and dolphins, not to mention the breaching whales, but with only a week or so to spend there, time was condensed and we had barely unwound before we were heading home. We saw and experienced a bunch, but sort of missed the point.

It was only much later in life, when we cruised the Sea of Cortez over many months aboard *Brigadoon*, my Tripp 56 sailboat, that I really grew to appreciate the region. I had the time to slow down and take it all in. Before sailing south I read many books, starting with Steinbeck's *The Log From The Sea of Cortez*, followed by readings on the flora and fauna and geology of the region. I learned that it is one of the most unique environments on the planet with some plants and animals that are only found on the plethora of islands that are sprinkled throughout the Sea. I have grown to love the region's stark beauty and what Jacques-Yves

Cousteau referred to as "the aquarium of the world." I know I am not alone when I say that in the 30,000 or so miles we have cruised *Brigadoon*, from Nova Scotia to Hawaii, the Sea of Cortez is without a doubt my favorite of cruising grounds. And I am sure that you too, even over this brief week of our Cruise, will thoroughly enjoy your time there and want to make plans to return.

Make sure you slow down and take it all in,

Dan Gribble
Cruise Co-Chair

dogribble@cox.net
949-350-6120

with Gary Davidson
Cruise Co-Chair

gdavi2535@gmail.com
949-922-2193



General Cruise Information

¡Bienvenidos amigos!

The following pages provide some basic guidelines for the cruise and the area we'll be sailing. We hope you find these topics helpful as you plan for the event and as we meander our way through the beautiful Sea of Cortez. Fair winds and following seas!

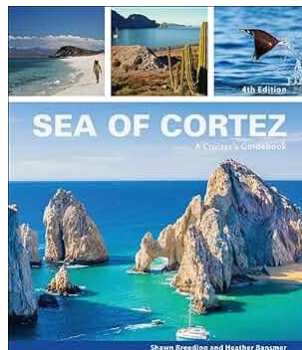
Cruising Guides & Navigation

Most of our planned daily sails are relatively easy, line of sight navigation. That said there are reefs, rocks and obstructions to watch for.

The highly recommended cruising guide for the area is **Sea of Cortez: A Cruiser's Guidebook 4th Edition** by Shawn Breeding and Heather Bansmer. The book is available from Landfall Navigation at <https://www.landfallnavigation.com>. We've provided some chartlets from this book of the areas referenced in the suggested itinerary in Appendix 3.

While all boats should have a GPS plotter, a navigation program installed on an iPad designed with connectivity and a GPS chip is a great backup.

Each boat should also carry paper charts of the area. Our understanding is that the charter boats will have basic paper charts.



What to Bring

The weather in May is generally moderate and should be quite good with air temps in the high 70's and 80's and water temps in the 70's- perfect for shorts and bathing suits and, of course, sunscreen and wide-brimmed hats.

For evenings- light jackets, sweaters, shawls should suffice and for sailing- light coastal foul weather jackets will be more than adequate. We are not planning any formal events, but some nicer casual clothes for the welcome and farewell parties are encouraged – blazers not required.

Where possible please use reef-friendly sunscreen.

Other items to consider bringing along – especially on charter boats – includes:

- CCA Burgee or Member Aboard Flag
- Portable VHF
- Personal flashlights
- Binoculars – yours may be better than charter boats'
- Sailing or garden gloves for line handling
- Portable speaker
- Backpack
- Extra masks, fins, snorkels
- Sailing tape, small lines, zip ties
- Water shoes – beaches can be gravel
- Shoes for hiking
- Epi-Pen and/or Benadryl for wasp and bee stings
- Bug spray
- Personal PFD's/tethers if desired
- Rashguard or swimming shirt

Weather / Time Zone

Most of the Sea of Cortez is on Mountain Time.

As noted earlier, the anticipated weather should be mild – good sailing conditions with light northerly/northwesterly winds to 15 knots and perhaps some southerly breezes. Swells and waves are typically minimal at 2-3 feet or less.

NOAA issues a weather report for the area at <https://tgftp.nws.noaa.gov/data/raw/fz/fzpn27.knhc.off.pz7.txt>. Look at the report for Southern Gulf of California. Predictwind and Windy.com are also fairly accurate for the area.

Occasionally at this time of year the area closer to La Paz can experience Coromuel winds. Occurring primarily in the late spring and summer, Coromuels are a south to south-west wind that typically starts late in the afternoon or early evening and blows throughout the night into the mid-morning. It has a rapid onset and can be very strong especially in the Bay of La Paz. We'll monitor the weather and recommend anchorages to accommodate the weather as needed.



Language

Most folks in Baja are fairly good at deciphering English, but Spanish is definitely the predominate language spoken. If you do know some basic Spanish, please consider using it as it will be appreciated by the locals. Consider using Google's translation features when you're stumped with a language barrier.

Currency / Credit Cards

The standard currency of Mexico is the Mexican Peso (\$MXN). At press time the exchange rate is about 16.5 pesos to the US dollar. They do use the dollar sign (\$) when pricing items so don't be alarmed when you see the marked prices!

While many places accept US dollars, plan on exchanging/carrying some pesos for taxis, small purchases and tips as the locals prefer pesos to the dollar currently. There are banks and ATM's available in both Loreto and La Paz. We were told that Banco Azteca offers the best exchange rate. Credit cards are widely accepted at most larger stores and restaurants. PRO TIP: if offered to pay in pesos or dollars when using a credit card, you'll likely get a better exchange rate paying in pesos. Tipping is always appreciated.

General Cruise Information

Provisioning

Note that there are basically two opportunities for provisioning – La Paz or Loreto/Puerto Escondido. Between those two areas there are virtually no stores except for a very small tienda in St. Evaristo. The islands we're visiting have no provisioning resources.

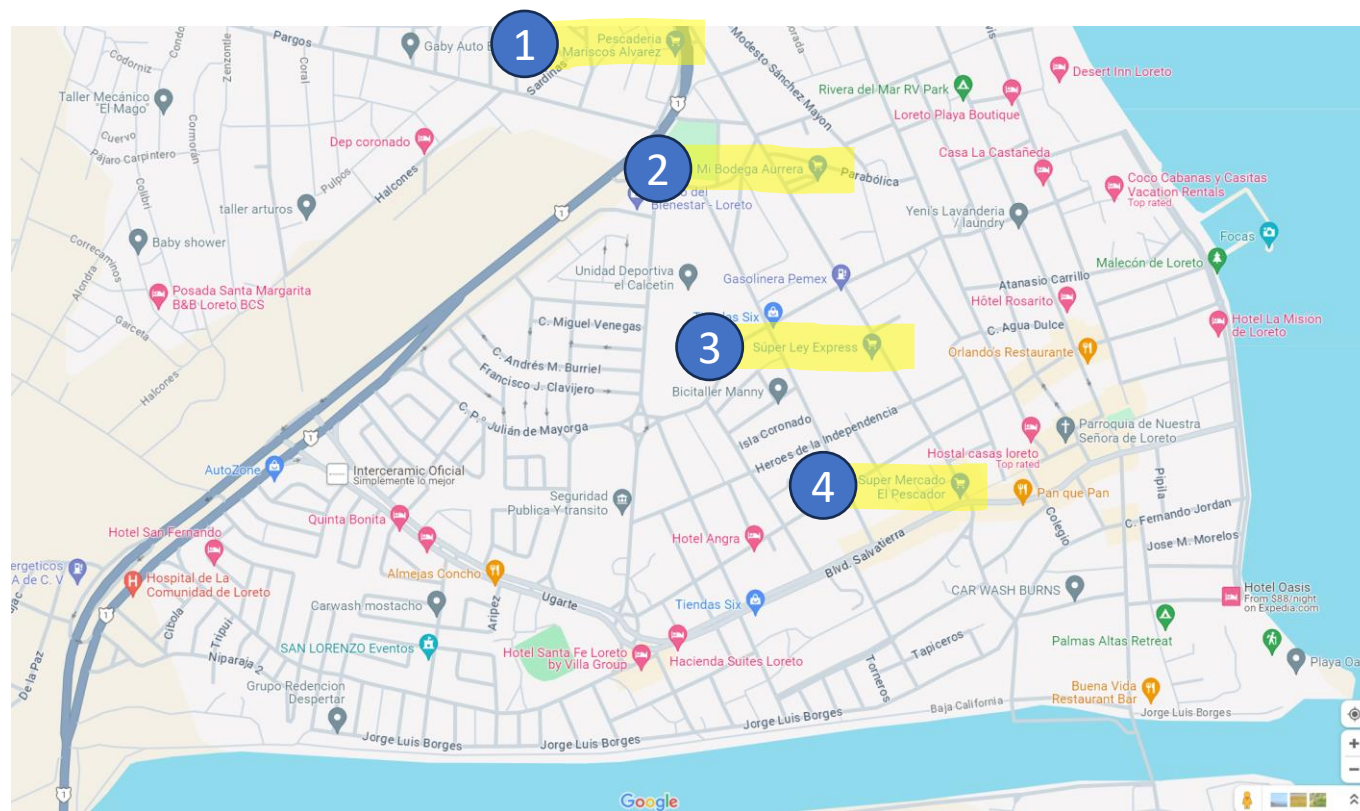
Officially, our cruise begins in the Loreto/Puerto Escondido area so these provisioning tips are focused on that area. We recognize that many will do their initial provisioning in La Paz, but for those provisioning or reprovisioning in the Loreto/Puerto Escondido area, there are a few good options.

- There are 3 large grocery stores in Loreto. **El Pescador** at the traffic light, **Super Ley Express** on Ayuntamiento, and **Bodega Aurrerá** further down on Ayuntamiento. There's also a pescaderia (fish market) and panaderia (bakery) located in town.
- El Pescador is locally owned and sort of like Trader Joe's. Super Ley Express is a larger market like a Ralph's and Bodega Aurrera' is a smaller, more cluttered version of Smart & Final.
- For adult beverages, there's a **Cactus** liquor store across the street and a little east of Pescador. There's another Cactus on the malecon.
- **Waldo's** is similar to Target.
- Taxi drivers will know where you're going if you mention any of these names.
- Additional provisioning options are available at Marina Puerto Escondido:
 - The small **Marina Market** has a surprisingly good stock of just about everything you may need. And the market has teamed with our welcome party hosts from **La Brisa** restaurant to offer a pre-provisioning package. See the pre-provisioning list online at the Cruise Event Webpage for more details on that.



Grocery Stores in Loreto

- 1 Pescaderia Mariscos Alvarez (Fish Market)
- 2 Bodega Aurrera
- 3 Super Ley Express
- 4 El Pescador



Transportation

We've arranged a 12-passenger van service with Outpost Adventures located at Marina Puerto Escondido for our use on Friday May 3rd to shuttle crews back and forth from Loreto for provisioning. Rates are more reasonable for larger groups, so we'll be coordinating a sign-up process to consolidate trips for this service.

Otherwise, taxis are readily available throughout the Loreto/Puerto Escondido area. Plan on paying for your taxi in pesos if possible. Credit cards may not be accepted.

While we found Uber and Didi ride-sharing available in La Paz, we did not explore this option in Loreto.

General Cruise Information

Communications

Cellular Service

The IDD code for Mexico is 52. Wifi is typically available in the marinas and hotels. Most US cellular carriers will offer an international data plan and we recommend contacting your carrier for details. Cellular service in La Paz, Loreto and Puerto Escondido is fairly consistent. That is not necessarily the case once we get out onto the Sea. There are many areas along our way which will have no cell service.

We may have a few boats on the cruise with Starlink, so we suggest making friends with those folks if connectivity at sea is important to you.

There's a roster of cruise participants with cellphone numbers in Appendix 2 at the end of this guide.

VHF / Cruise Net

While under way all boats should monitor VHF channel 16 for emergency use and calling. Additionally, we will use VHF channel 69 for our group cruise communications.

Veteran Mexico cruiser Al Garnier will host a cruise net discussion at 0830 each morning of the cruise on this channel. Please plan on joining this discussion each morning for destination and weather updates, and to share experiences or provisioning/support needs.

There are also general cruise nets in both Puerto Escondido and La Paz on channel 22A at 0800 each morning. Might be fun to listen in there as well.

Medical / Emergencies

Anyone with significant allergies might want to bring along an EpiPen-type of injectable device and/or Benadryl as there will likely be wasps and or bees around some of the islands. The bees search out anything liquid so take care to eliminate potentially enticing water, drinks, etc.

We do not have an official fleet surgeon along on this trip, but anyone experiencing an emergency situation should reach out to the CCA flotilla via VHF radio channel 69 for assistance.

There are pharmacies and hospitals located in both La Paz and Loreto, but not much medical assistance in between. Be sure to bring any normal medications you take.

You may also want to bring along a simple first aid kit.

For **EMERGENCIES AT SEA** we've received conflicting information, so here's everything we heard:

The Fourth Naval Zone can be reached via phone at 615-111-505-59 or 615-152-82-52. Also, the Navy shares the following contact number 800-627-4621.

Both La Paz and Marina Puerto Escondido monitor VHF 16. The La Paz Harbor Master can be reached at +52 6121 222 035 or +52 6121 22 060.

Search and rescue can be reached at +52 6121 226 513

Safety

While the cruising area is stunningly beautiful, it's also rustic and can be dangerous. There are many opportunities for mishaps. Exercise extreme caution when navigating the Sea and while in dinghies or ashore.

Please see the official CCA recommendations on the use of life jackets and tethers in Appendix 1.

Berthing / Mooring / Anchoring

Skippers are responsible for securing their own berths in Puerto Escondido Marina and in La Paz.

That said, we have arranged a med-tie along the long dock at the Puerto Escondido Marina for all vessels for the night of Friday, May 3rd.

Know that Puerto Escondido Marina is exceptionally busy this time of year and has asked each skipper to provide information about their vessel ahead of arrival. Please coordinate with Dan Gribble to coordinate the marina's requirements.

All vessels taking part in the med-tie must coordinate directly with the marina officials to arrange payment for berthing and electricity use.

Along the cruise, all vessels will anchor in the various island coves we'll visit. Depths in most anchorages are between 15-40 feet deep with good holding ground. Take care to avoid anchoring in coral beds.

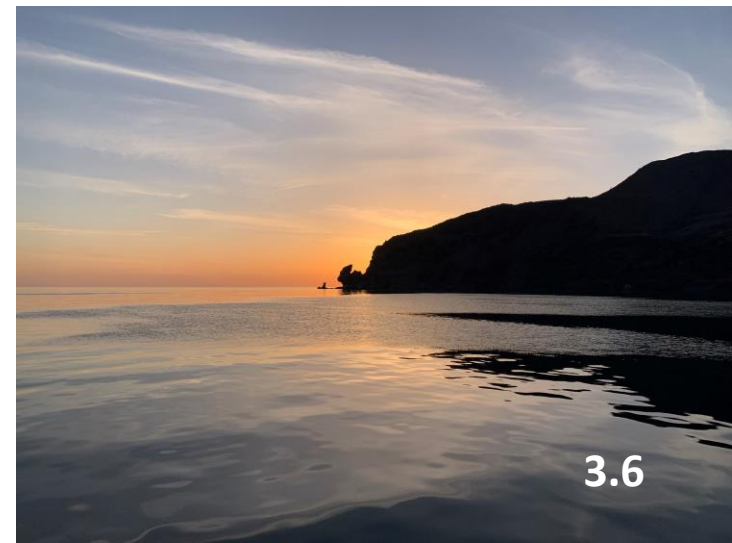
Skippers are encouraged to share their destination and anchoring plans each morning on the cruise net. We may elect to do a group raft up at one or more anchorages along the way.

At the end of the cruise, the charter fleet will return to the charter base at Marina Costa Baja. Private vessels should have already made their berthing arrangements at one of the other marinas in La Paz or plan to anchor off the city.

Fuel / Water

Fuel and water are available in Puerto Escondido Marina and at Marina Costa Baja in La Paz. Charterers are reminded that they must return their vessels with full fuel and water tanks (including dinghy tank).

Cruise participants are encouraged to avoid drinking water from the local water supply. Be sure your provisions include enough bottled drinking water for the duration of the trip.



General Cruise Information

Supplies / Boatyards / Repairs

There are a few hardware stores and a marine store located in Loreto, and more located in the La Paz area.

Agencia Arjona is the local marine store and also has fishing supplies. This is similar to a small West Marine.

Ferre Mar is a good fishing/diving/marine store.

Marina Puerto Escondido has a boatyard with Travelift, marine services and outboard repair facility.

Fishing / Park Permits

The Sea of Cortez is a great place for angling with a huge variety of fish available. Be aware though, that as long as there is fishing equipment aboard, every person aboard requires a valid fishing license, regardless if they are fishing or not. Fishing licenses are available online (<https://sportfishing.bajacalifornia.gob.mx>), in Loreto at the panga marina, at Ferre Mar or at the Marina Puerto Escondido.

Individual licenses are about \$25 USD per week.

You **DO NEED** park permits for the Espiritu Santo and Partida Islands area and for the Loreto National Park (the whole area around Loreto including Isla Carmen, Danzante and Coronado). Officials may come out and check in any of these areas for your permit and for your fishing license.

Park permits for Espiritu Santo/Partida/Balandra are included in charter boat contracts. Loreto National Park permits are available

3.7

at Marina Puerto Escondido or at the Loreto panga marina.

Formalities

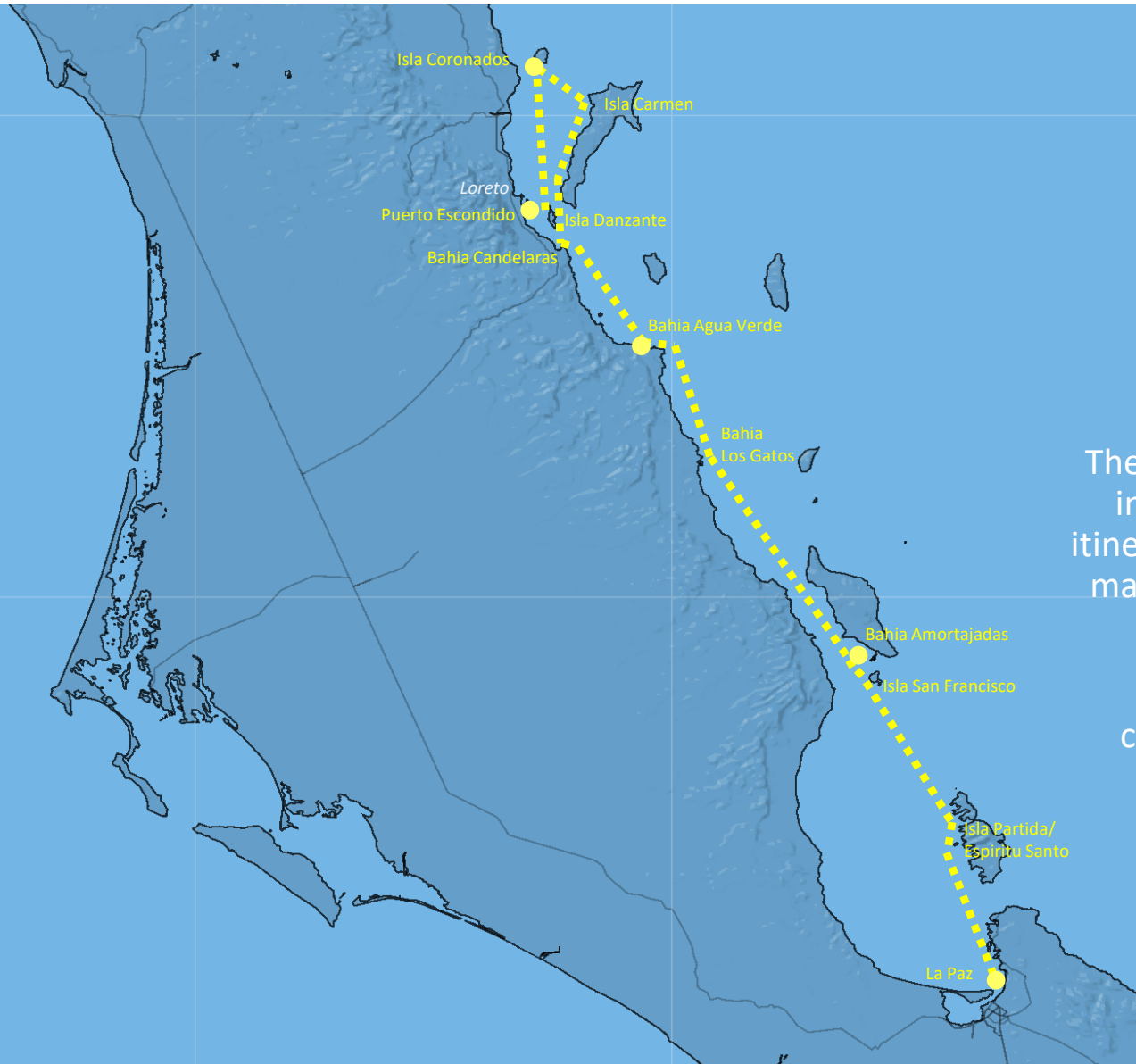
When leaving Puerto Escondido, skippers should check out with the harbormaster on VHF channel 16. Likewise, when entering La Paz harbor, hail the harbormaster on channel 16.

All vessels should fly the Mexican flag as a courtesy from the starboard spreader on sailboats. The CCA burgee or member aboard flag should be flown from the port spreader on sailboats if it's not practical to fly it from a proper pigstick at the masthead. Powerboats should generally fly the CCA burgee from the bow staff. Refer to the CCA yearbook for proper flag etiquette.





Suggested Itinerary May 3rd – May 12th



Puerto Escondido to La Paz

The general idea is to sail the Sea of Cortez in a flotilla, but we've purposely kept the itinerary somewhat loose since there are so many great places to visit and the weather may affect our plans.

So, each morning we'll coordinate via a cruise net at 0830 to determine the next gathering spot and plan from there!

Slow down... and take it all in...

Suggested Itinerary

The following itinerary was developed by Dan Gribble based on a wealth of local knowledge gained from his extensive cruising in the area. It's a flexible itinerary with a couple open days and four planned get-togethers for the flotilla. A week doesn't do this area justice, so we'll discuss and adjust as weather and whims dictate.

Friday May 3, 2024 – Puerto Escondido Welcome Fiesta

- Arrive in Puerto Escondido and med-tie boats
- If time permits, go to large supermarkets in town to buy provisions
- Cruise Check-In at the marina 1500-1800 hours
- Welcome Fiesta at La Brisa restaurant at the marina in Puerto Escondido – 1800-2100 hours – Taco bar, beer, wine, margaritas, music – casual dress
- Spend night aboard vessels in Puerto Escondido

Saturday May 4, 2024 – Depart Puerto Escondido for Isla Danzante or Isla Carmen

- Provision boats if not accomplished on Friday May 3
- **OPTION 1:** Sail 3 nm across to Isla Danzante to anchor for the first night.
- There are three coves at the north end of the island between Honeymoon Cove and Divorce Cove (!!) which could accommodate the fleet.
- **OPTION 2:** Sail 10-15 nm to various coves on Isla Carmen
- Activities include snorkeling and hiking ashore
- Both islands uninhabited so no services

Sunday May 5, 2024 – Sail to Isla Coronado

- Hike the extinct volcano for breathtaking views, snorkel or lounge on the beach
- Uninhabited so no services



Suggested Itinerary

Monday May 6, 2024 – Begin the Sail South

- **OPTION 1:** Sail from Isla Coronado to Isla Carmen and anchor at Puerto Balandra (about 10 nm). This is a very well protected bay which could accommodate the entire fleet.
- **OPTION 2:** Sail from Isla Coronado to Bahia Salinas or Punta Perico on the back side of Isla Carmen
- Activities include snorkeling and hiking ashore
- Uninhabited so no services

Tuesday May 7, 2024 – Continue South to Bahia Candeleros or Bahia Agua Verde

- **OPTION 1:** Sail to Bahia Bahia Candeleros (about 25 nm depending on your departure point). This is a large bay that could hold the entire cruise fleet. It offers good protection except from north winds and swell and occasionally experiences westerly winds (Coromuels).
- **OPTION 2:** Sail to Bahia Agua Verde (about 40 nm depending on your departure point). There are three anchorages around the bay so we would spread out the fleet, but all are within a dinghy ride of each other. Personally, while a longer passage, it is a more interesting anchorage than Bahia Candeleros.
- Activities include snorkeling and hiking ashore
- There is a small village there with a very small market and a small taco place on the beach.

Wednesday May 8, 2024 – Bahia Agua Verde – Fiesta aboard *Peter B*

- Sail to Bahia Agua Verde. There are three anchorages around the bay so we would spread out the fleet, but all are within a dinghy ride of each other.
- Mid-way get together aboard Gary & Sandi Hill's *Peter B* – BYO cocktails & appetizers – 1500-1800 hours (tentative)



Suggested Itinerary

Thursday May 9, 2024 – Continue South to Los Gatos or Bahia Amortajada

- **OPTION 1:** Sail to Puerto Los Gatos (18 nm)
- This area is known for its colorful rock formations.
- While relatively protected, there are reefs and rocks to avoid when entering.
- **OPTION 2:** Sail to Bahia Amortajada on Isla San Jose (46 nm) This is a large and well protected bay that could hold the entire cruise fleet. The white sand beach there is several miles long.
- Activities include snorkeling and hiking ashore
- Uninhabited so no services
- There is a lagoon there accessible by dinghy through the surf. It is lined with mangroves and loaded with birds - a fun adventure!
- At the northwest end of the bay there is an abandoned salt mine that is interesting to explore.
- We may have a group lunch or cocktail party ashore on the beach. While I have not experienced them, word is there are no-see-ums after dark on the beach so back to the boats for dinner!

Friday May 10, 2024 – Continue South to Isla San Francisco, Isla Espiritu Santo, Los Islotes or Isla Partida

- Sail south. Could stop at Isla San Francisco for a lunch stop and hike (about 5 nm) or could stop at Los Islotes, some pinnacle rocks off the north end of Isla Partida, and swim with the sea lions before continuing on to your anchorage.
- Continue on to anchor at any of several anchorages on the west side of either Isla Partida or Isla Espiritu Santo (about 20 - 30 nm depending on your choice of anchorage).
- Activities include snorkeling and hiking ashore
- Uninhabited so no services



Suggested Itinerary

Saturday May 11, 2024 – Back to La Paz

- Depart to sail to La Paz (about 10 - 20 nm depending on where you anchored for the night)
- Could stop at Bahia Balandra at the north end of La Paz peninsula for a lunch stop on the way. This is one of the most photographed bays in the Sea of Cortez with a long white sand beach and snorkeling.
- Arrive Costa Baja Marina in the afternoon
- Farewell Fiesta at Hotel Indigo at Marina Costa Baja – 1800-2100 hours – Mexican dinner, beer, wine, margaritas, music – casual dress

Sunday May 12, 2024 – Adios!

- Disembark charter vessels by 10 AM
- Depart for airport to fly home – private vessels sail on!



Appendix 1: CCA Recommendations on Life Jackets and Tethers



The Cruising Club of America's Recommendation on Life Jackets and Tethers

Stay Onboard; if not, Stay Afloat!

Wearing a life jacket and tether when on deck and underway is part of a vessel's Culture of Safety. When operating in warm waters, in daylight, and in calm conditions, virtually any approved life jacket will work. When conditions are more challenging, an offshore life jacket plus tether become the "right tools for the job." It's vital that you not only have sufficient buoyancy for rough conditions but that you remain attached to the vessel by means of a tether. This greatly reduces the chance of going overboard when rescue may be challenging for your crew.

The use of tethers is recommended under the following conditions:

- Sea conditions: large waves, heavy winds, cold water, confused seas
- Low visibility conditions: nighttime, fog, heavy rain, large seas
- Crew limitations: shorthanded, less experienced, lack of training, age and fitness
- Vessel design: boats with fewer protected spaces, sailing at greater angles of heel, smaller or lighter displacement sailboats with quicker motions



Appendix 2: Cruise Participant Roster

Name/Type/Station	Crew	E-Mail	Mobile Phone
Bella Barca			
<i>FP Astrea 42</i>	Dan Gribble	dogribble@cox.net	(949) 350-6120
<i>SOC</i>	Wendy Mason	wendyjmason30@gmail.com	(949) 350-6130
	Loc Waters	loc@le-waters.com	(310) 505-0525
	Sue Ellen Waters	sueellenwaters@hotmail.com	(213) 304-8471
	Kerry Caswell	kac16@cox.net	(949) 293-8356
	Rob Vandervort	robvan500@gmail.com	(714) 227-8176
Chez Nous			
<i>Imperial 51</i>	Al Garnier	agarnier@reinrag.net	(310) 600-0158
<i>SOC/BOS</i>	JoLinda Garnier	jl@reinrag.net	(310) 871-0606
	Janet Garnier	kgarnier02@gmail.com	(508) 367-3899
	Henry DiPietro	hdp0707@gmail.com	(386) 523-6191
Indefatigable			
<i>Lagoon 450 S</i>	Ric Sanders	rsandersemail@gmail.com	(562) 505-7920
<i>SOC</i>	Monika Sanders	monikasanders101@gmail.com	(562) 505-0045
	Fin Beven	FinBeven@MSN.com	(626) 616-7124
	Deborah Norum	deborahnorum@gmail.com	(208) 874-3797
	Jim Robinson	JayRobA@aol.com	(760) 990-1225
	Cathy Robinson	Ccride@aol.com	(760) 522-4594
	Brent Mathews	brentmathews1@outlook.com	(928) 499-4489
	Dana Cottle	cottle@northlink.com	(928) 713-0487
Little Frog			
<i>Bali Catspace 40</i>	Julie Kallfelz	jkallfelz@gmail.com	(401) 363-2191
<i>BOS</i>	Andrew Kallfelz	akallfelz@gmail.com	(401) 447-4033
	Chris Otorowski	cotorowski@mac.com	(206) 369-6302
	Shawn Otorowski	shawn@otorowskilaw.com	(206) 909-5139
	Eric Phipps	ephpps@aol.com	(760) 429-3461
Matangi			
<i>Kiwi 46</i>	Steve Brown	Finco@sbcglobal.net	(714) 425-9788
	Rashelle Koon	raskoon@gmail.com	(714) 742-5030
Mola Mola			
<i>Fleming 55</i>	Mick Bacich	breasy@aol.com	(916) 801-2864
<i>SOC</i>	Pam Bacich	breasy@aol.com	(916) 801-2864
	Ed Meserve	tangaro@sbcglobal.net	(949) 278-0281
	Barbara Meserve	tangaro@sbcglobal.net	(949) 278-0283

Marina Puerto Escondido Harbormaster	+52 (613) 105 2890
Marina Costa Baja	+52 (612) 121 6225
Dream Yacht Charters Customer Service	+52 (612) 141 7581

Name/Type/Station	Crew	E-Mail	Mobile Phone
Ninin			
<i>Lagoon 450 S</i>	Gary Davidson	gdavi2535@gmail.com	(949) 922-2193
<i>SOC</i>	Nancy Davidson	ndavi41789@gmail.com	(949) 422-6876
	Doug Jorgensen	doug@metrexvalve.com	(626) 825-4442
	Margaret Jorgensen	marg@msjorg.com	(626) 222-3706
	Ryan Davidson	rdavidson9630@gmail.com	(949) 422-9013
	Sierra Lancaster	sierra.r.lancaster@gmail.com	(843) 437-2586
	Jack Jorgensen	jackjorgs@gmail.com	(626) 399-2415
Peter B			
<i>Power 75</i>	Gary Hill	garzophil@gmail.com	(949) 795-3486
<i>SOC</i>	Sandi Hill	tugwillyb@gmail.com	(949) 795-3485
	Bob Winters	epicbob@aol.com	(714) 272-4646
	Corky Winters	cwinters73@me.com	(714) 272-7467
	John Cotton	qtipnb@aol.com	(714) 336-5396
	Cindy Cotton	ctc2123@aol.com	(949) 293-1985
Redonda			
<i>Lagoon 380</i>	Jim Quanci	jim.quanci@gmail.com	(415) 640-4461
<i>SAF</i>	Mary Lovely	mary.p.lovely@gmail.com	(415) 990-4461
	Jim Antrim	jka@antrimdesign.com	(510) 221-7684
	Cheryl Antrim	cherylantrim@yahoo.com	(510) 367-8525
	Todd Hedin	todd@toddhedin.com	(415) 987-3938
	Liz Baylis	LizBaylis@gmail.com	(415) 595-6552
Rukba			
<i>Oceanis 41.1</i>	Wytie Cable	wcable8@gmail.com	(619) 742-0331
<i>SOC</i>	Sally Cable	stcable22@gmail.com	(619) 840-2060
Vezad			
<i>Sun Odyssey 449</i>	Steve Calhoun	steve.calhoun@colliers.com	(323) 646-6880
<i>SOC/PNW</i>	Amanda Calhoun	hooner5@cox.net	(310) 993-4855
	Commodore Jay Gowell	jay.gowell@gmail.com	(401) 225-4728
	Elizabeth Gowell	eliz.gowell@gmail.com	(401) 884-0595
	Carl Fuller	cfuller@alisonmortgage.com	(949) 300-4925
	Kary Fuller	karyfuller@mac.com	(949) 887-8522
Zanzibar 2			
<i>Sun Odyssey 519</i>	R/C James Eddy III	jeddyfamily@sbcglobal.net	(714) 552-6785
<i>SOC</i>	Lisa Eddy	lisaheddy@gmail.com	(714) 454-4014
	Kerry Deaver	kerry.deaver@gmail.com	(714) 745-9055
	Mike Segerblom	mikesego@ussclub.org	(949) 646-2010
	Mette Segerblom	mettes@occsailing.com	(949) 645-9412
	Don Ayres III	don3@ayresgroup.net	(949) 244-5387
	Chris Jones	jones@yellowdogprop.com	(719) 331-2494
	Bobbi Jones	jones@yellowdogprop.com	(719) 338-3848

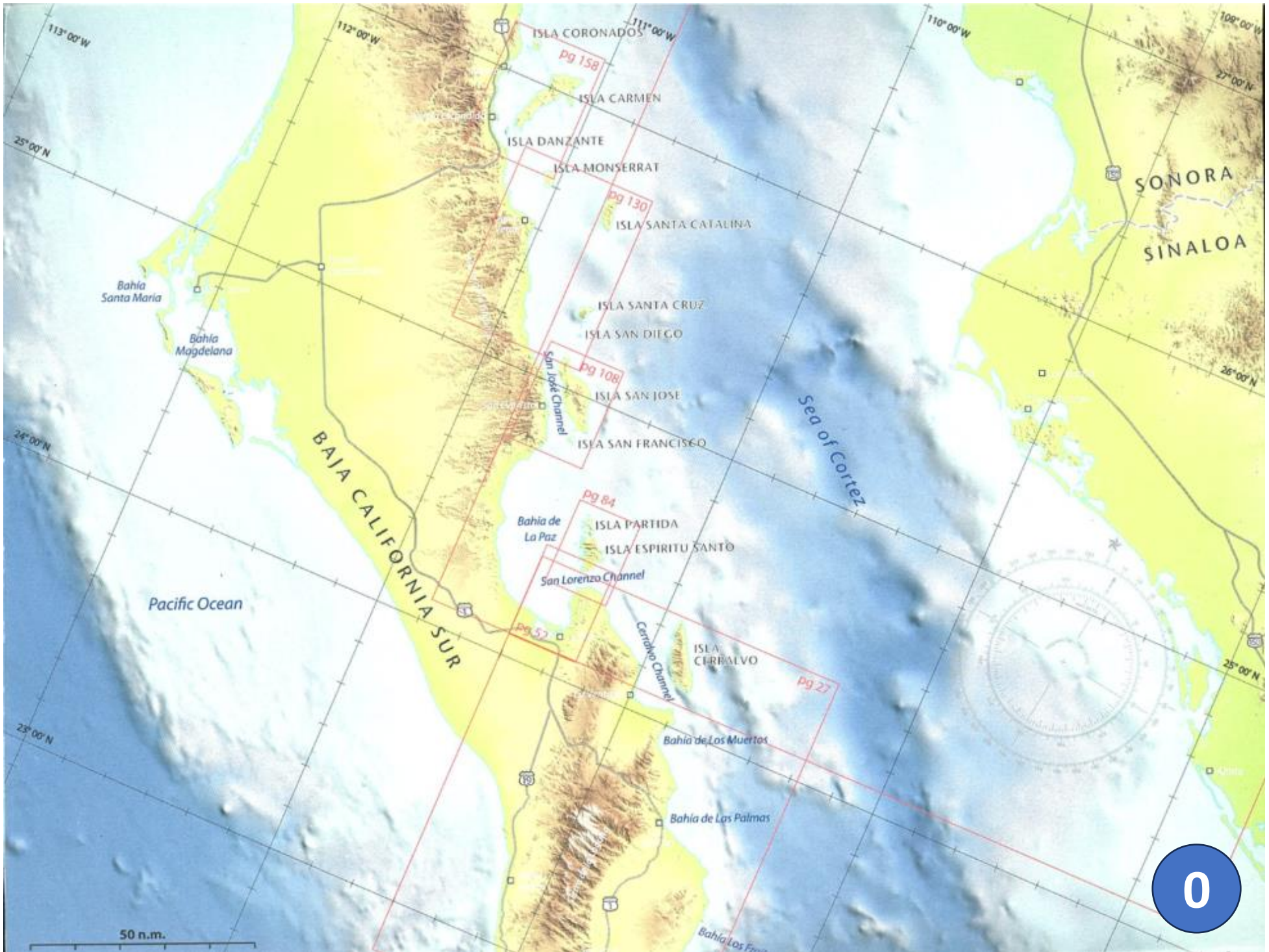
Appendix 3: Cruise Chartlets

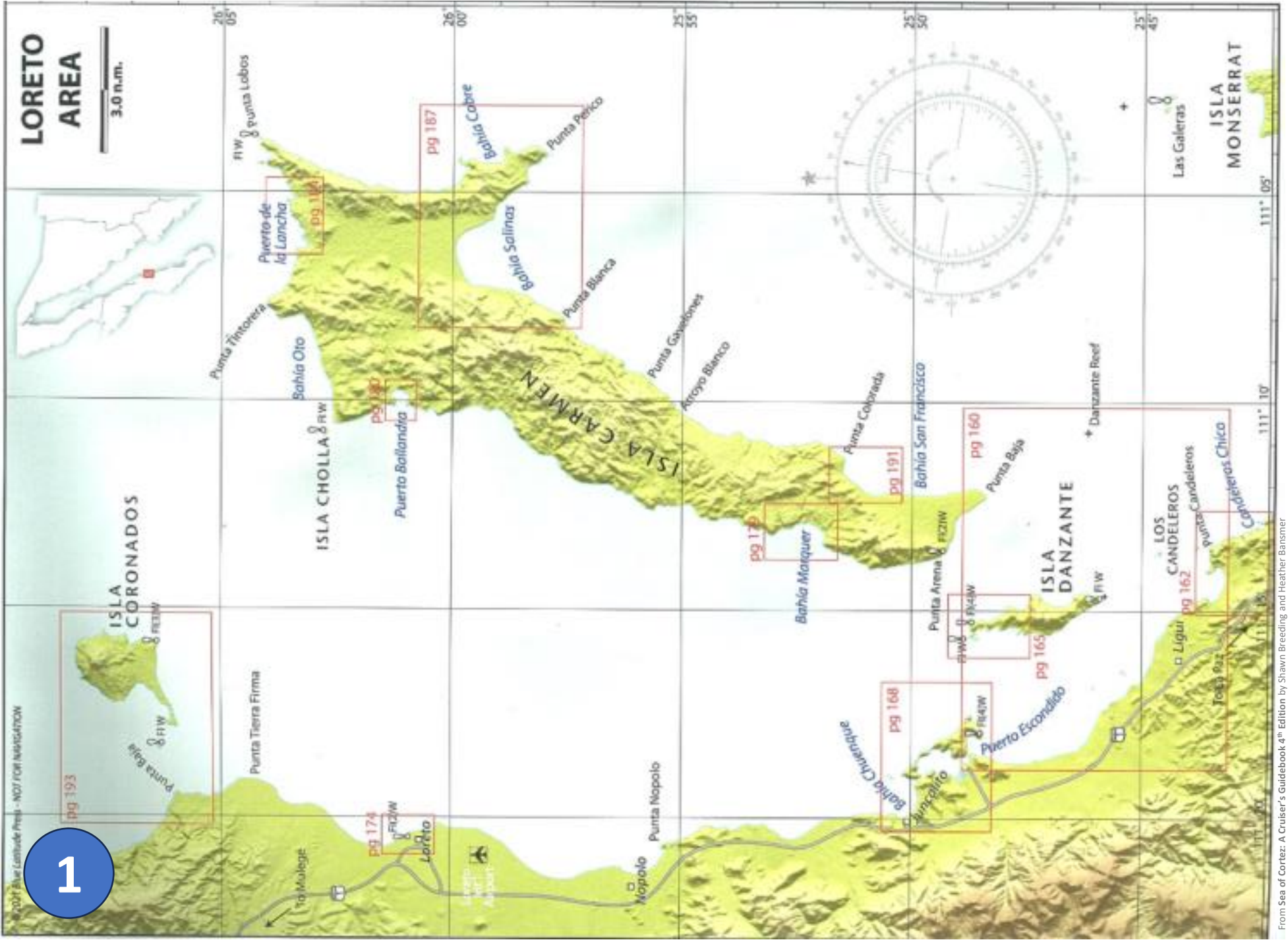


*The following pages contain cruise chartlets of the areas noted in our suggested itinerary. They have been scanned from pages of **Sea of Cortez: A Cruiser's Guidebook 4th Edition** by Shawn Breeding and Heather Bansmer and are provided for reference and note taking only. Our thanks to the authors. Do not scale. Not for navigational use.*

- 0 Gulf of California Overview
- 1 Loreto Area
- 2 Puerto Escondido
- 3 Marina Puerto Escondido
- 4 Isla Danzante North
- 5 Isla Coronados
- 6 Bahia Salinas / Punta Perico
- 7 Puerto Ballandra
- 8 Los Candeleros / Isla Danzante
- 9 Los Candeleros Anchorages
- 10 Bahia Agua Verde Area
- 11 Bahia Agua Verde
- 12 Puerto Los Gatos

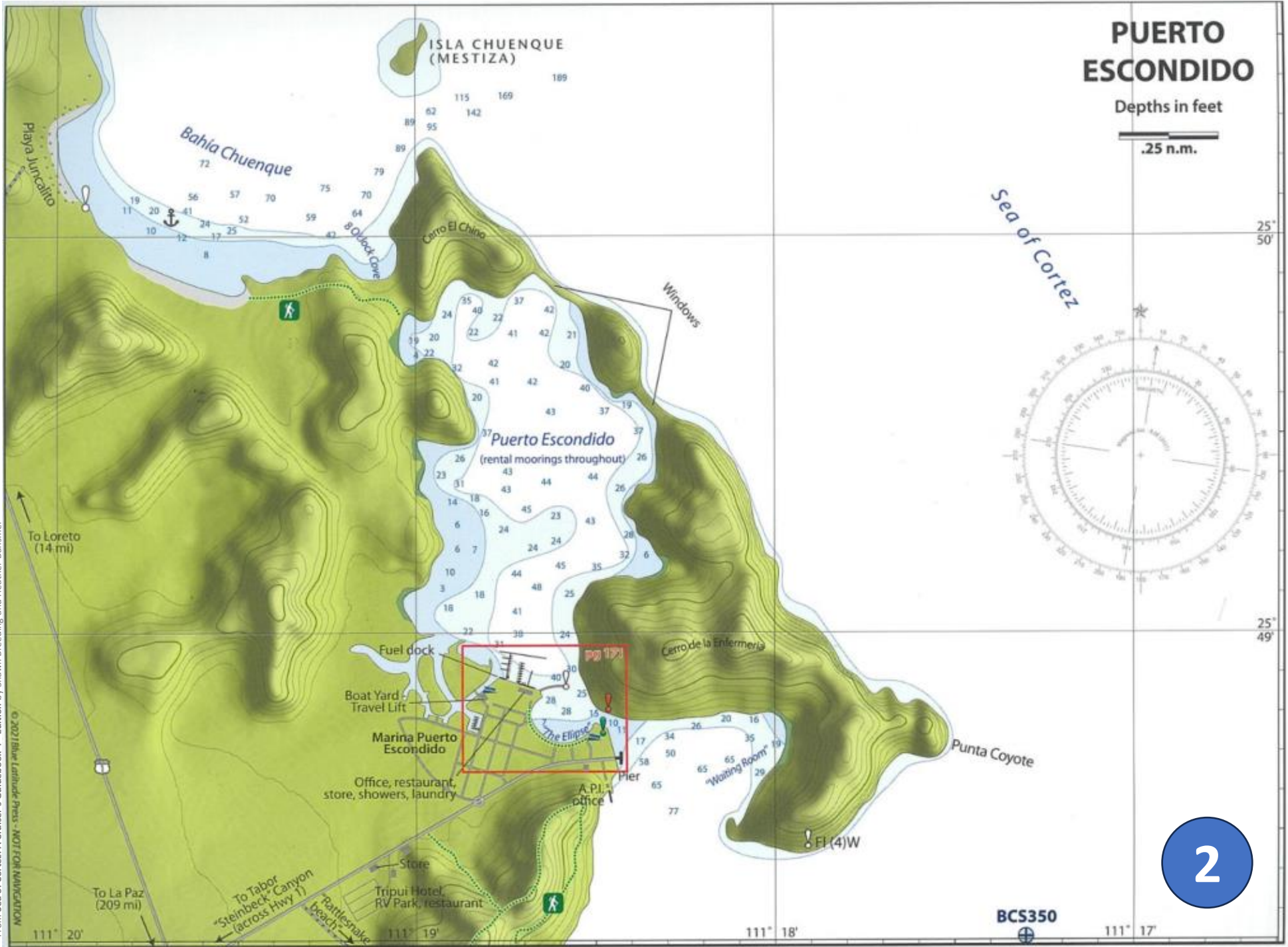
- 13 Isla San Diego to Isla Santa Catalina
- 14 Canal de San Jose
- 15 Bahia Amortajada
- 16 Isla San Francisco
- 17 Isla Espiritu Santo & Isla Partida
- 18 Los Islotes
- 19 Ensenada El Cardonal
- 20 Caleta Partida
- 21 La Paz Area Overview
- 22 Puerto Balandra
- 23 La Paz Harbor
- 24 Table of Approximate Distances in Nautical Miles





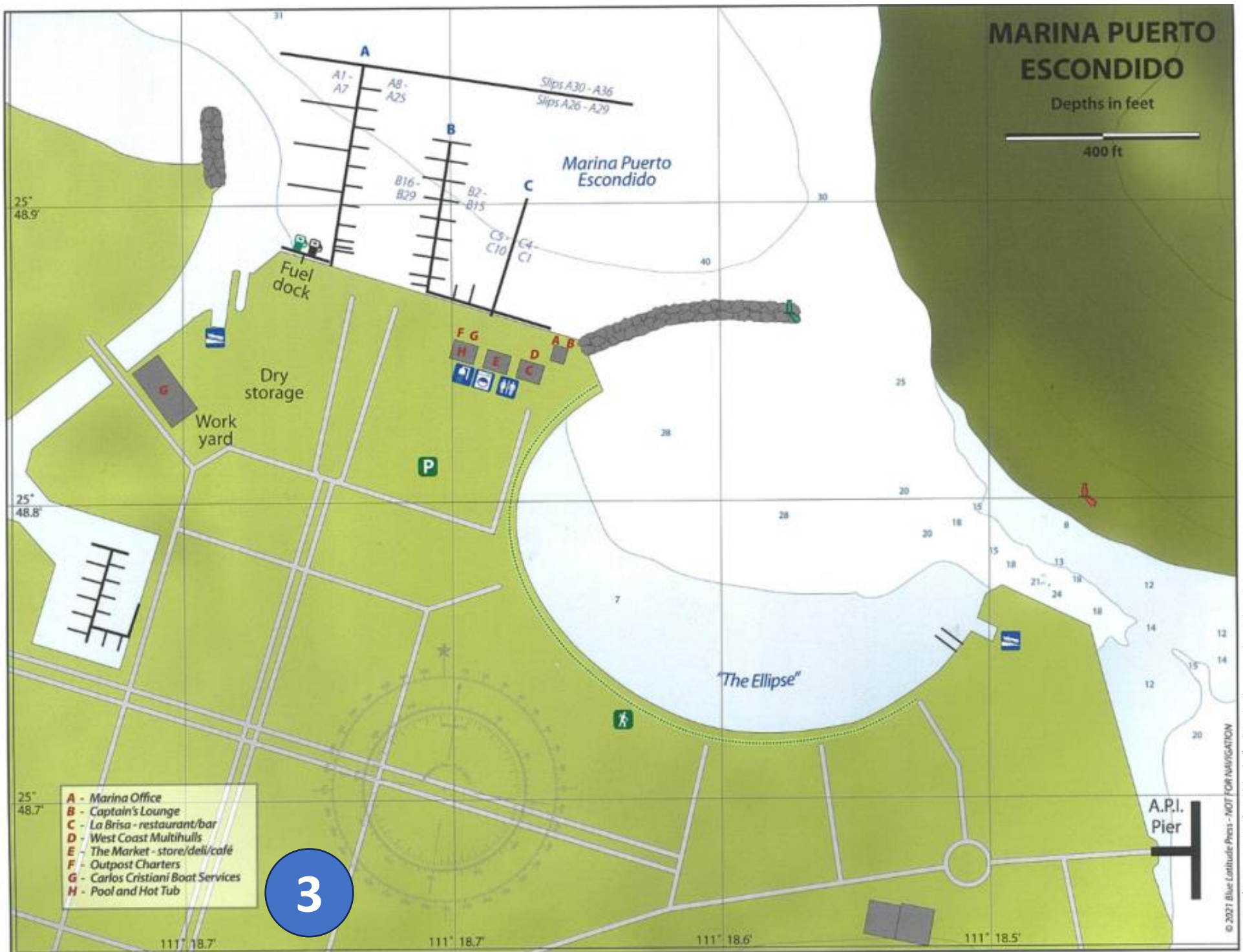
Loreto Area

From Sea of Cortez: A Cruiser's Guidebook 4th Edition by Shawn Breeding and Heather Banisner

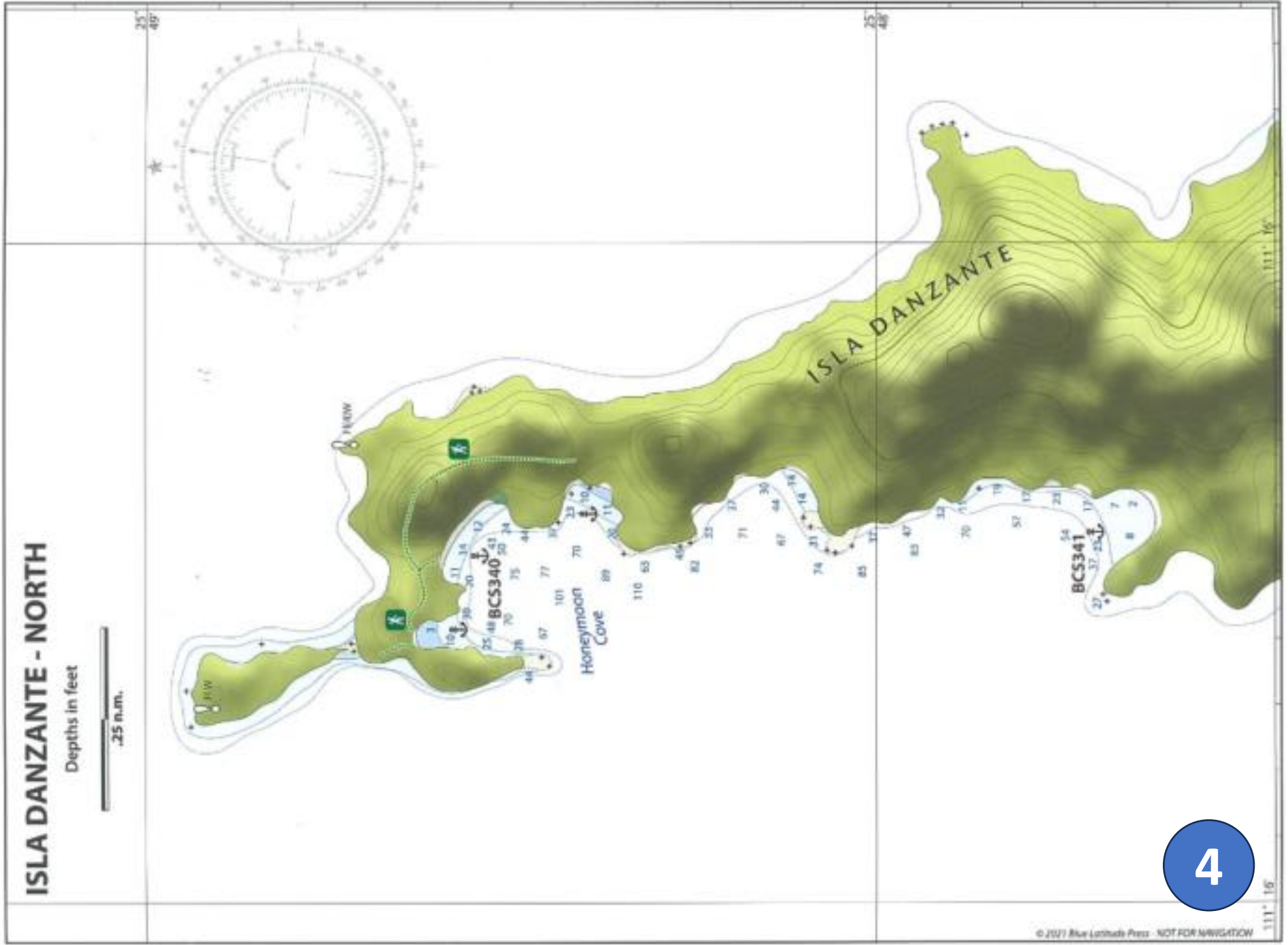


2

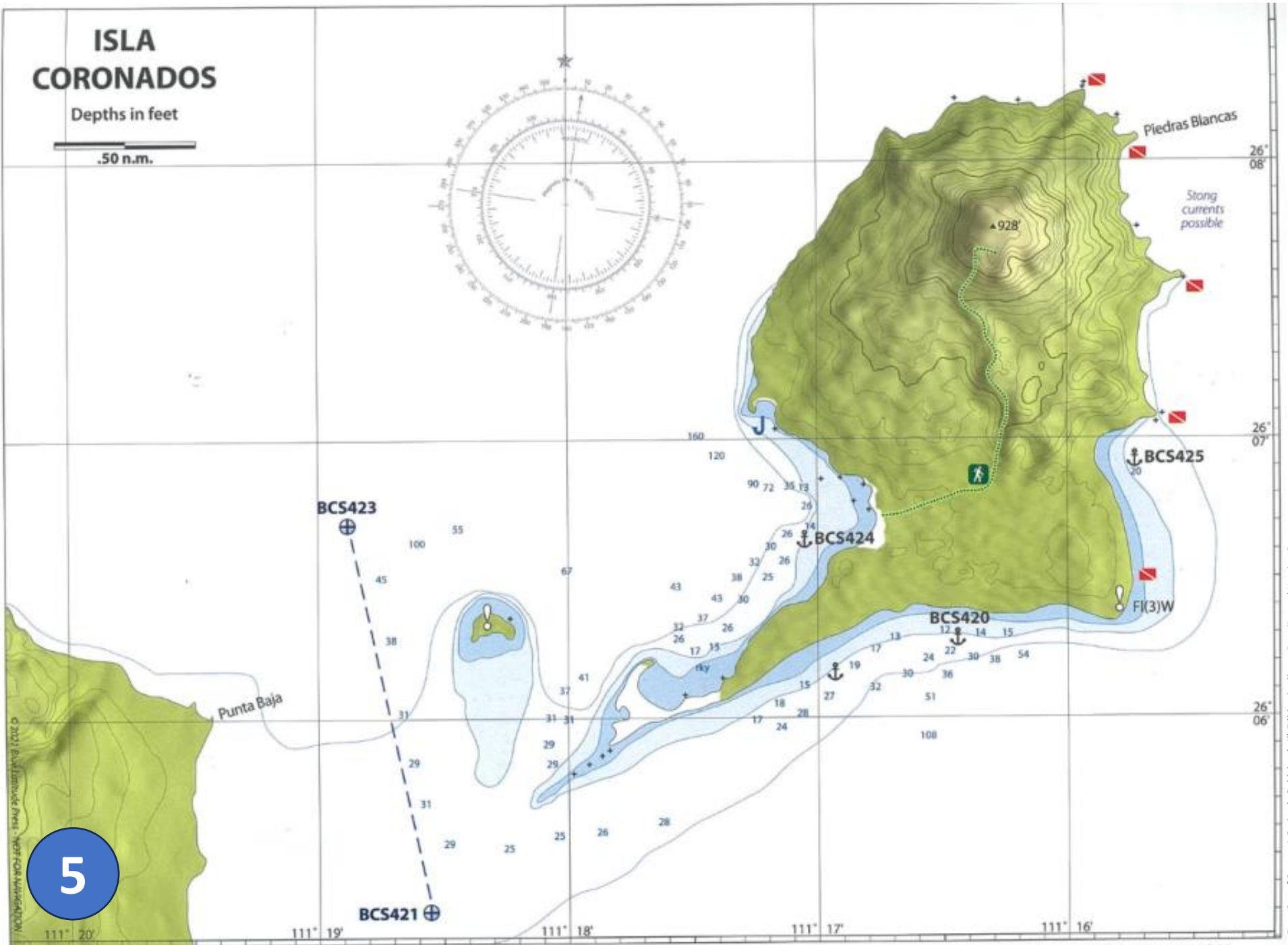
Puerto Escondido



Marina Puerto Escondido



Isla Danzante North

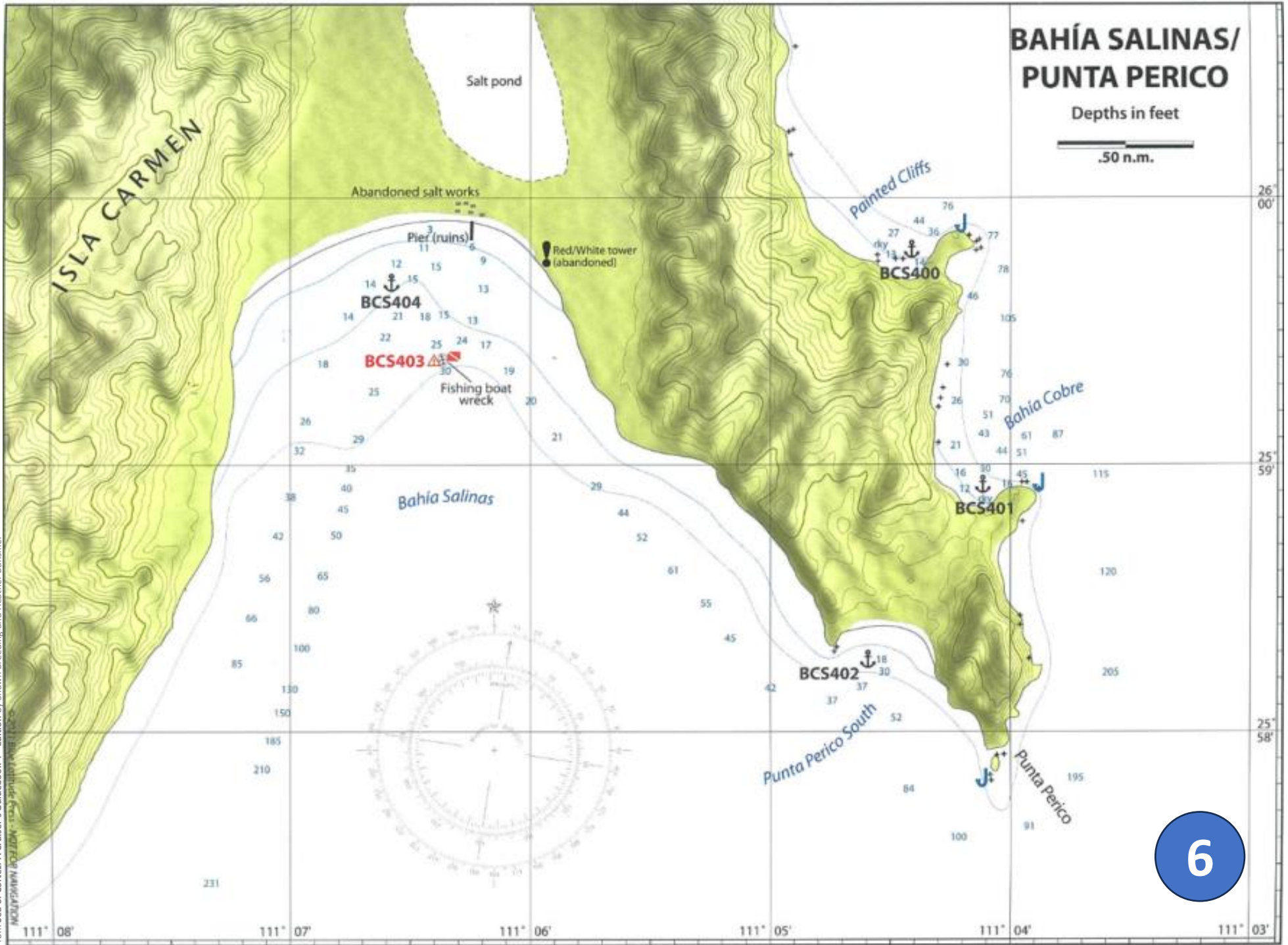


From Sea of Cortez: A Cruiser's Guidebook, 4th Edition, by Shawn Breeding and Heather Bansmer

5

Isla Coronados

From Sea of Cortez: A Cruiser's Guidebook, 4th Edition by Shawn Breeding and Heather Bansmer



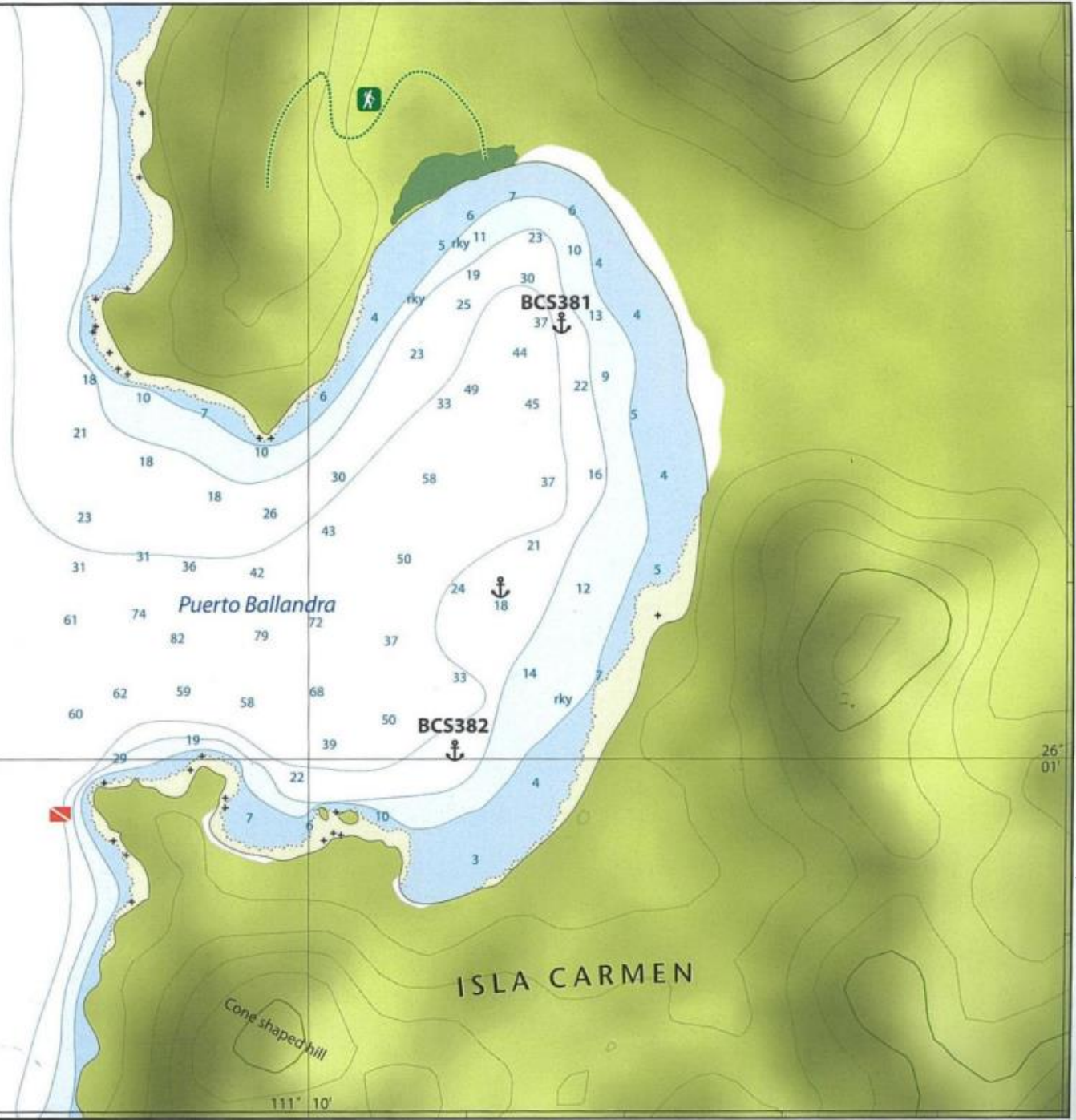
6

Bahia Salinas / Punta Perico

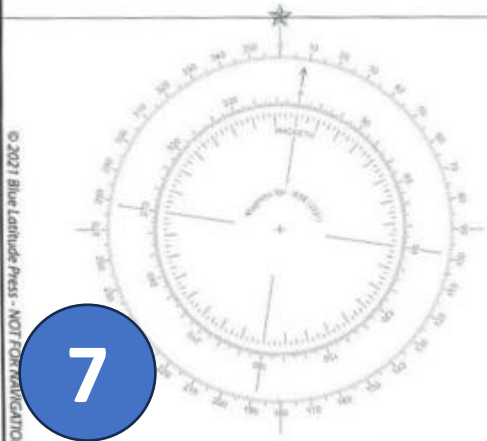
PUERTO BALLANDRA

Depths in feet

.10 n.m.



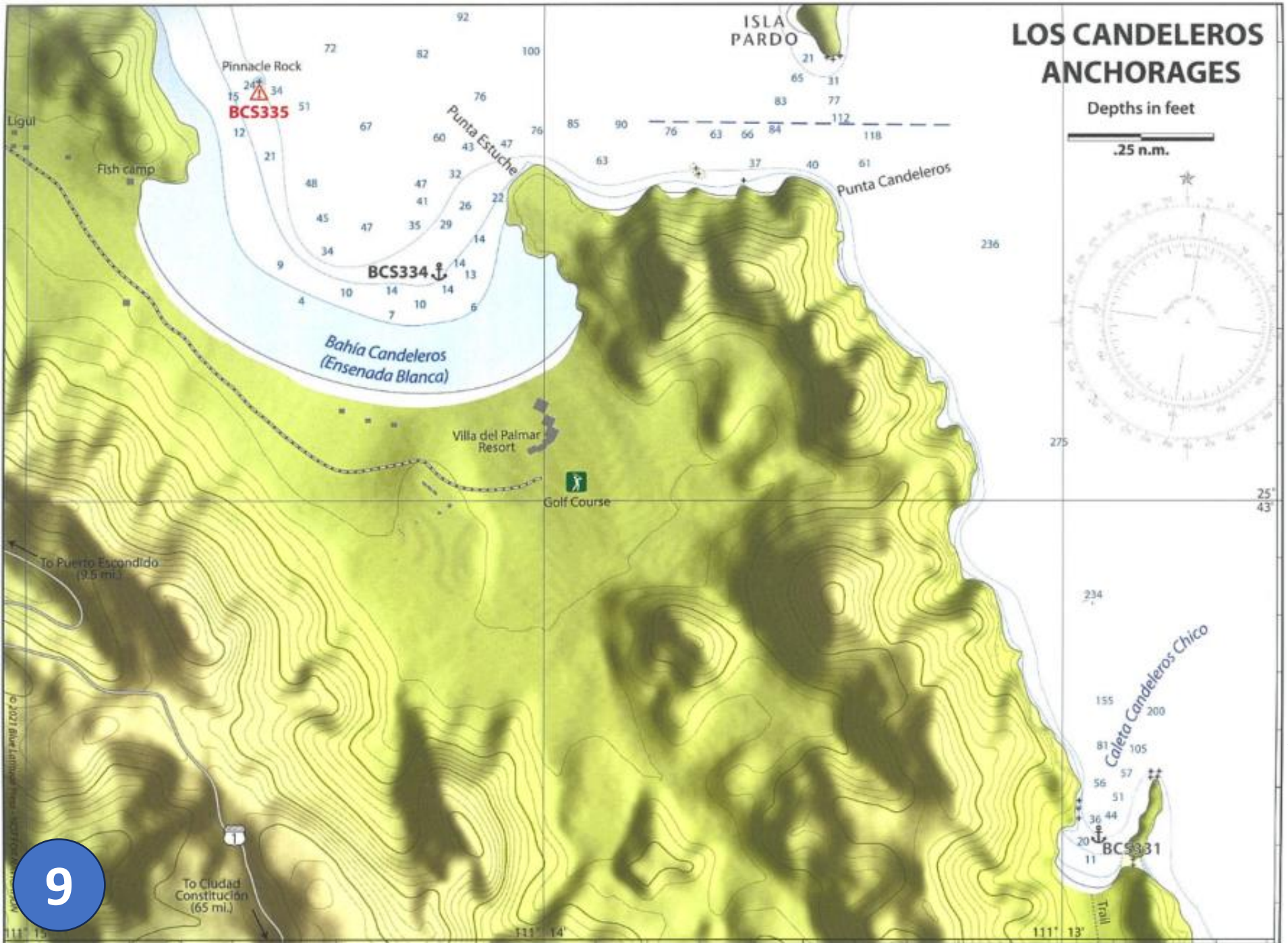
⊕ BCS380



7

Puerto Ballandra

From Sea of Cortez: A Cruiser's Guidebook 4th Edition by Shawn Breeding and Heather Bansmer



From Sea of Cortez: A Cruiser's Guidebook, 4th Edition by Shawn Breeding and Heather Bansmer

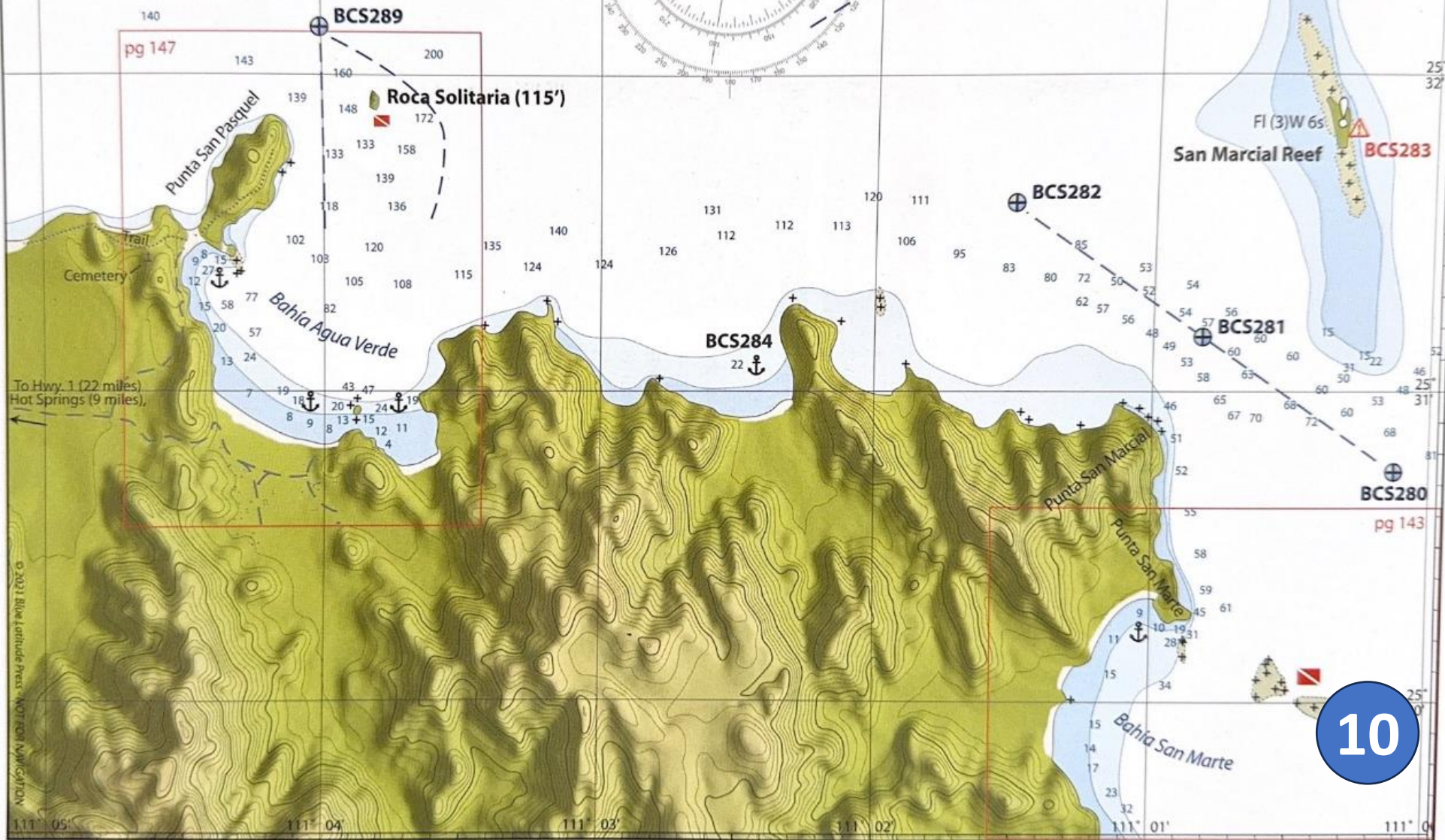
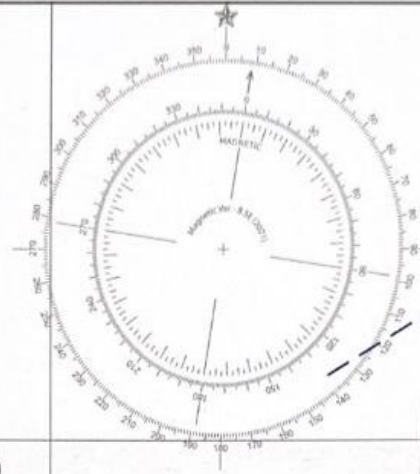
9

Los Candeleros Anchorages

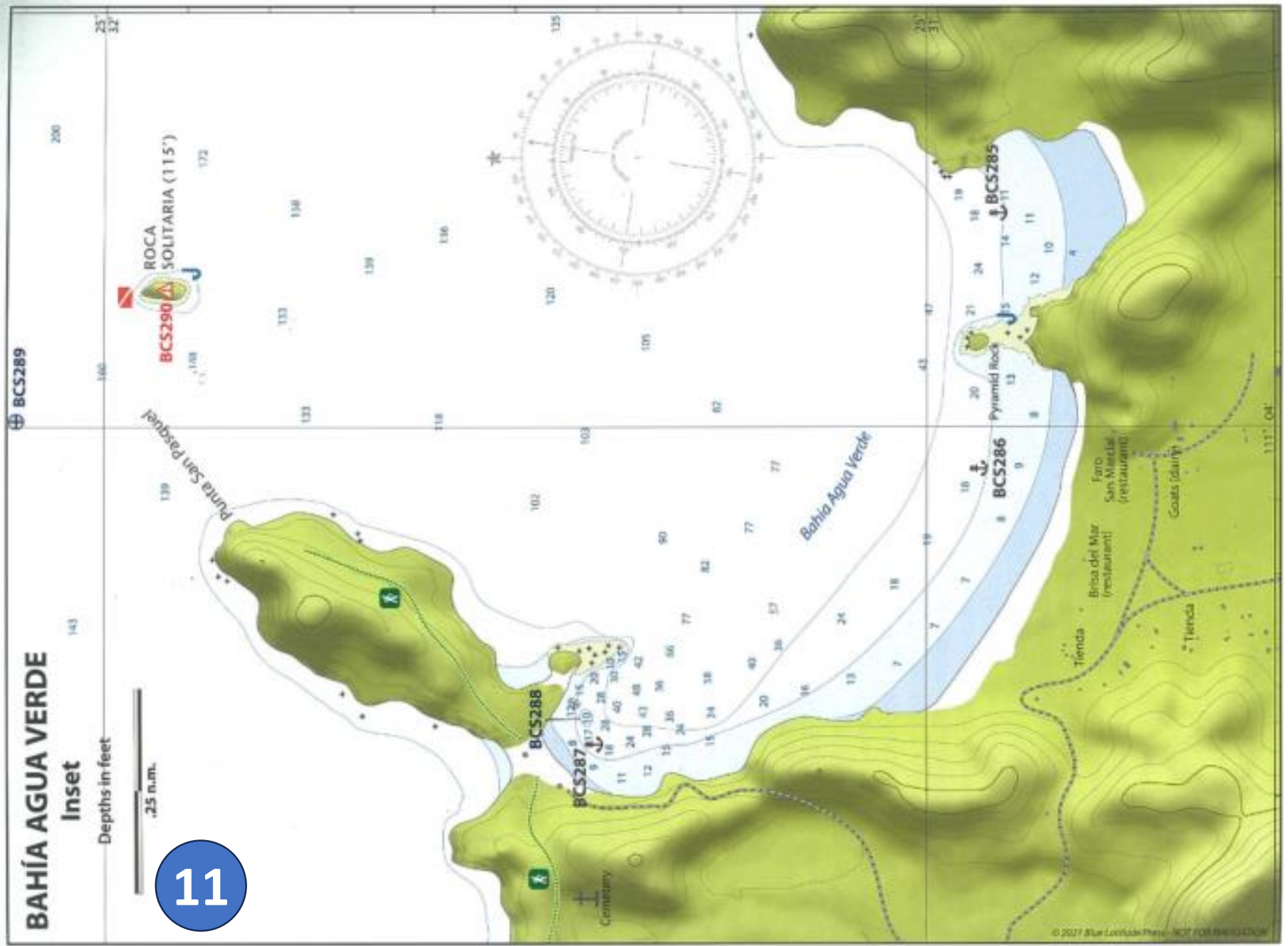
BAHÍA AGUA VERDE AREA

Depths in feet

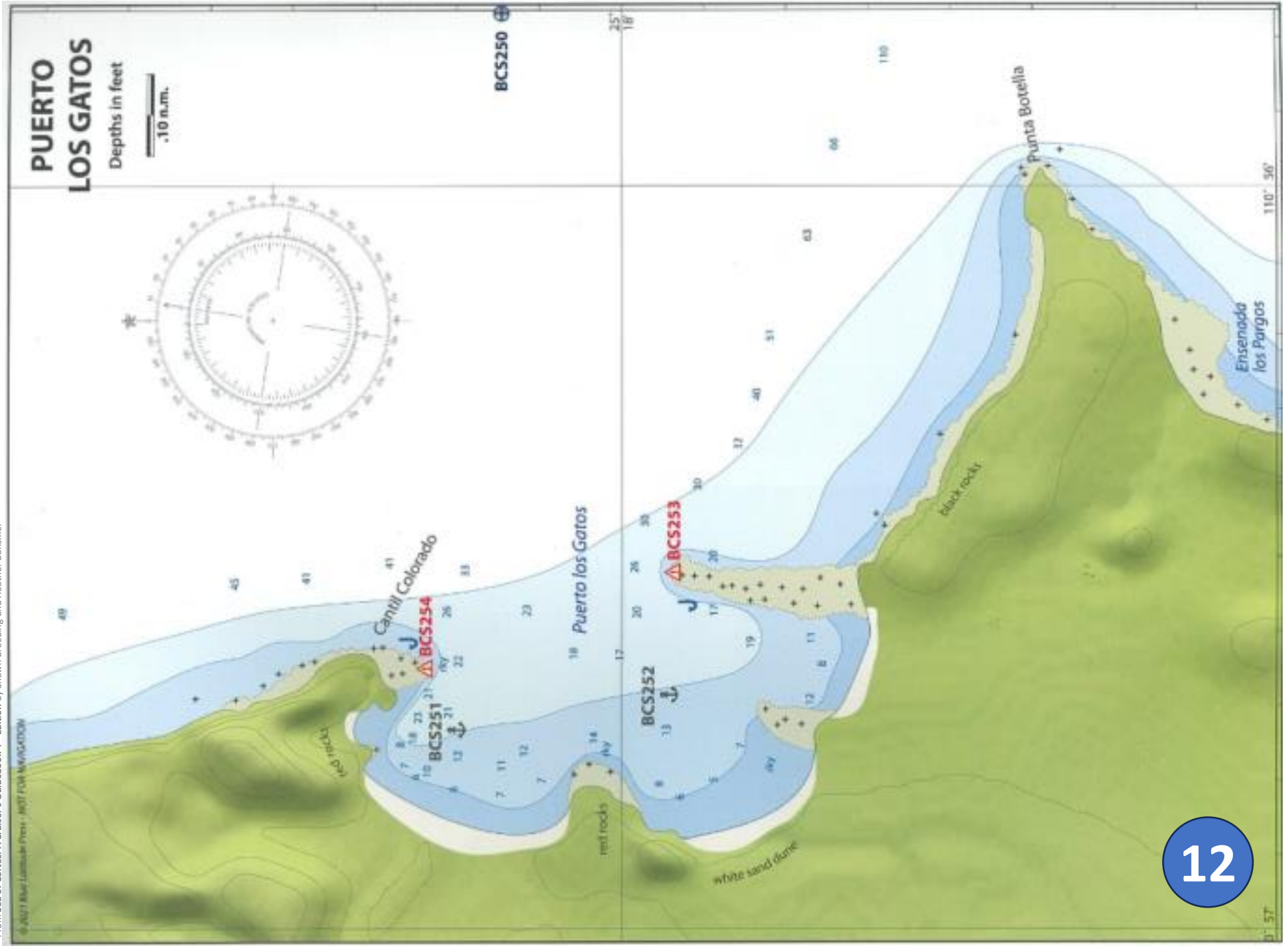
.50 n.m.

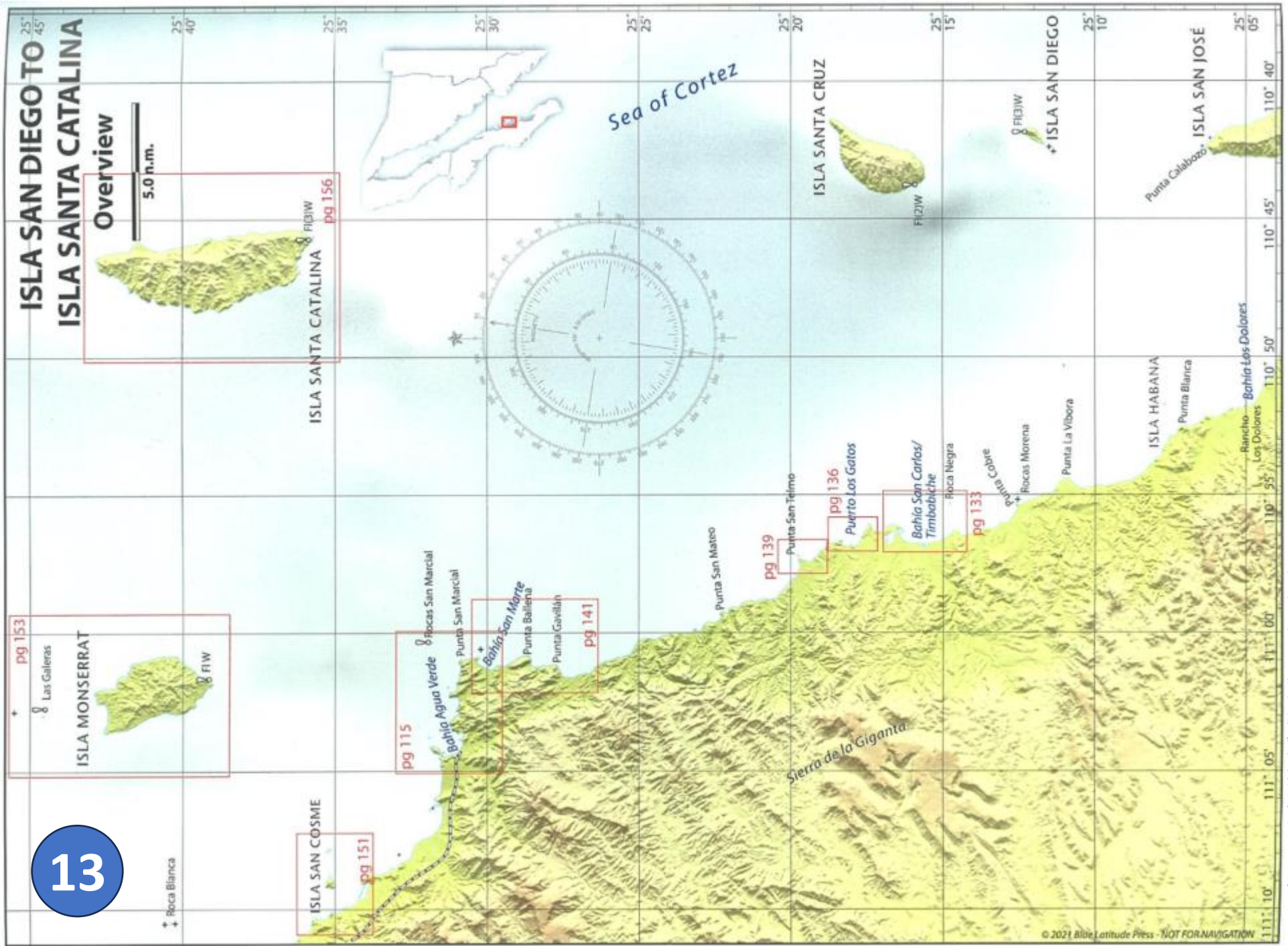


From Sea of Cortez: A Cruiser's Guidebook 4th Edition by Shawn Breeding and Heather Bansmer



Bahia Agua Verde



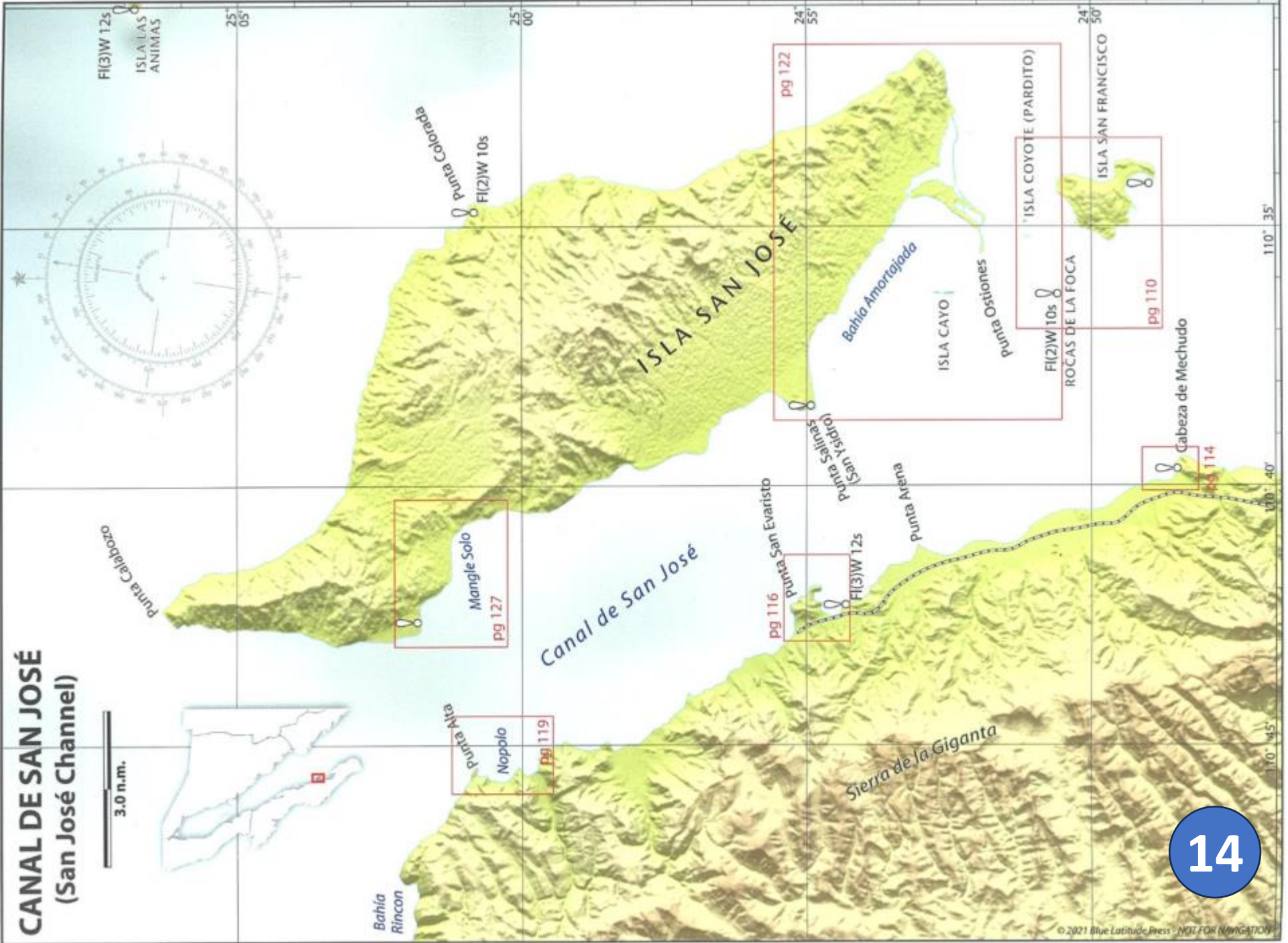


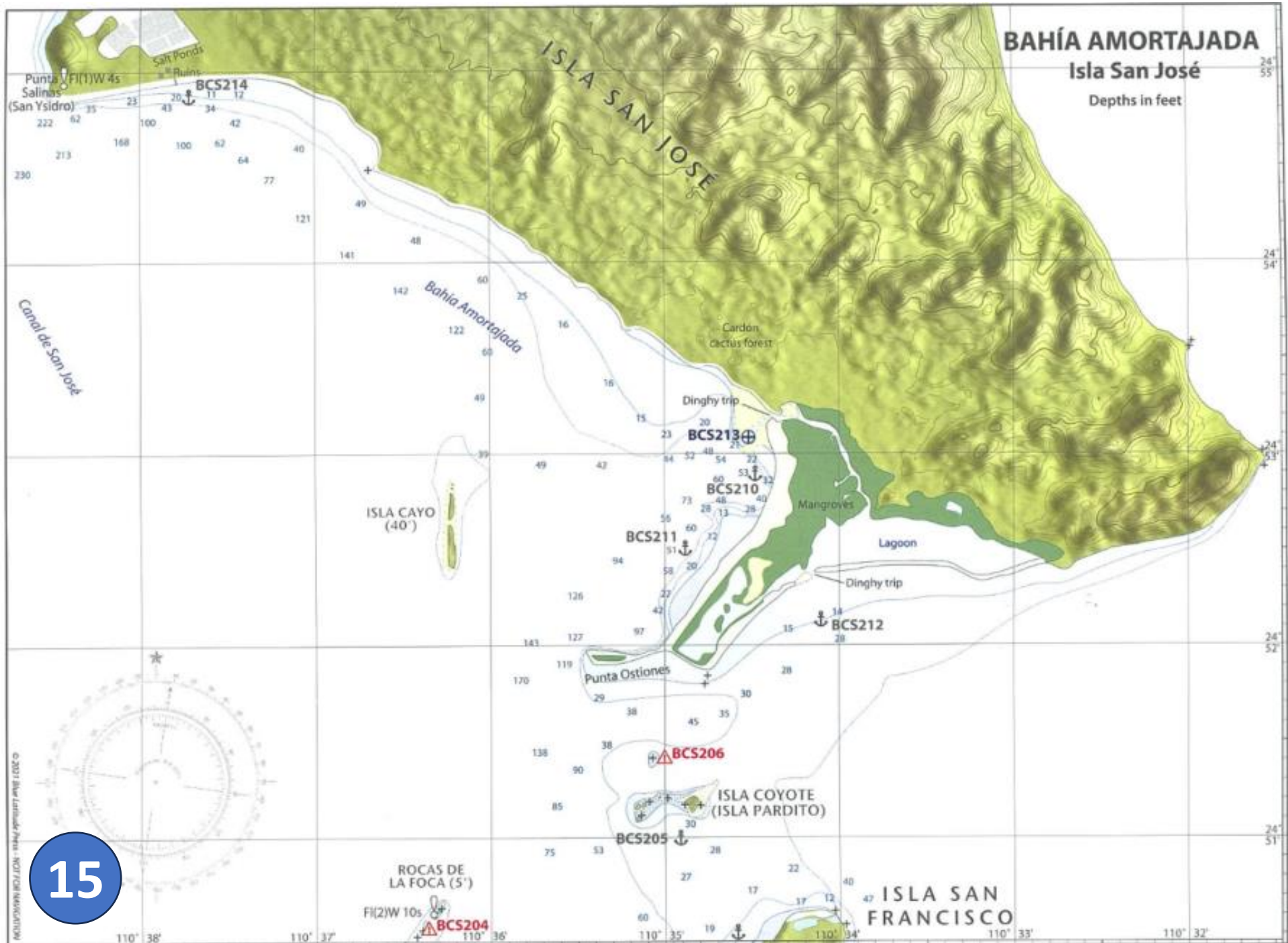
From Sea of Cortez: A Cruiser's Guidebook 4th Edition by Shawn Breeding and Heather Bamsner

Isla San Diego to Isla Santa Catalina

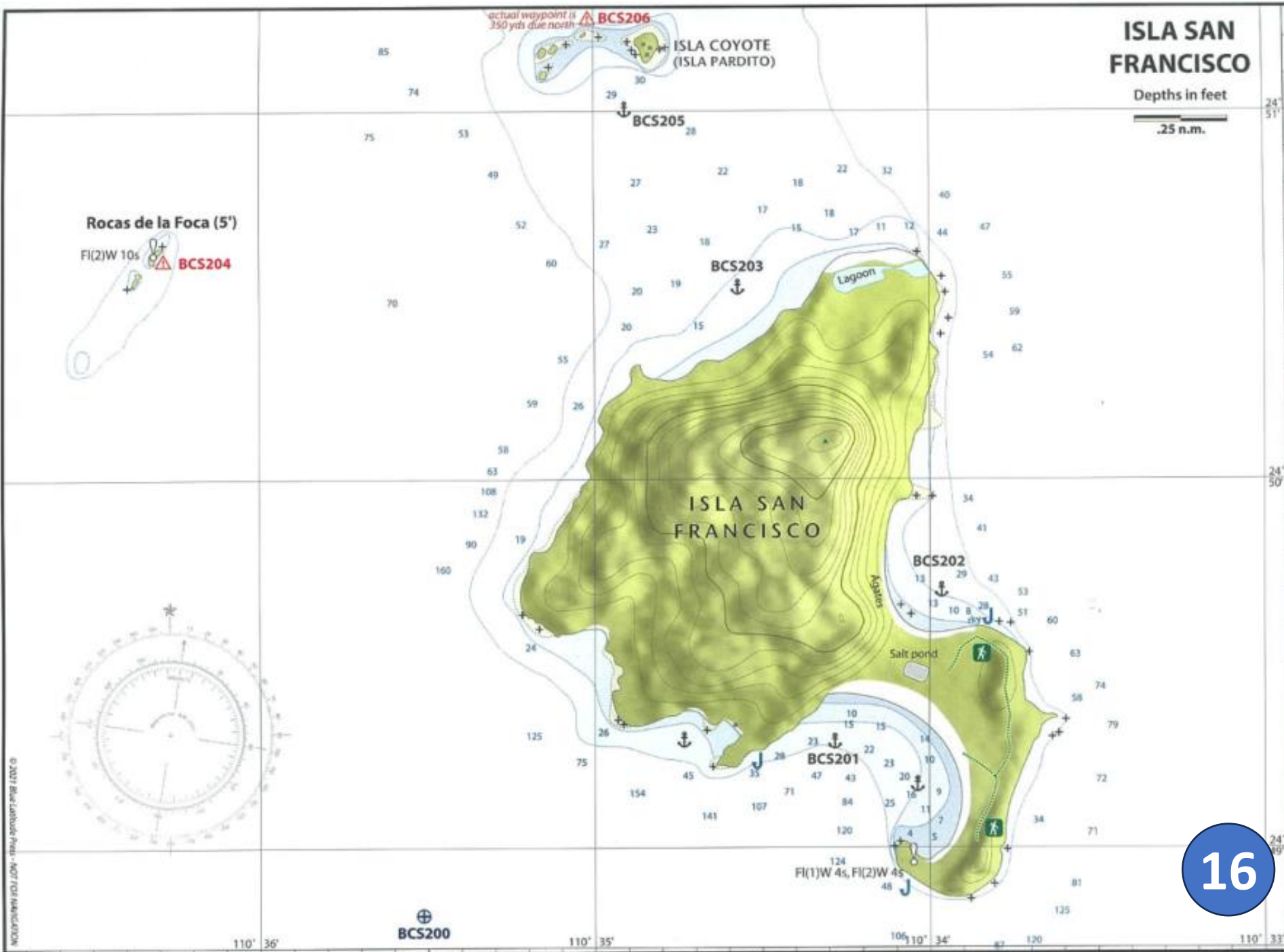
CANAL DE SAN JOSÉ (San José Channel)

3.0 n.m.



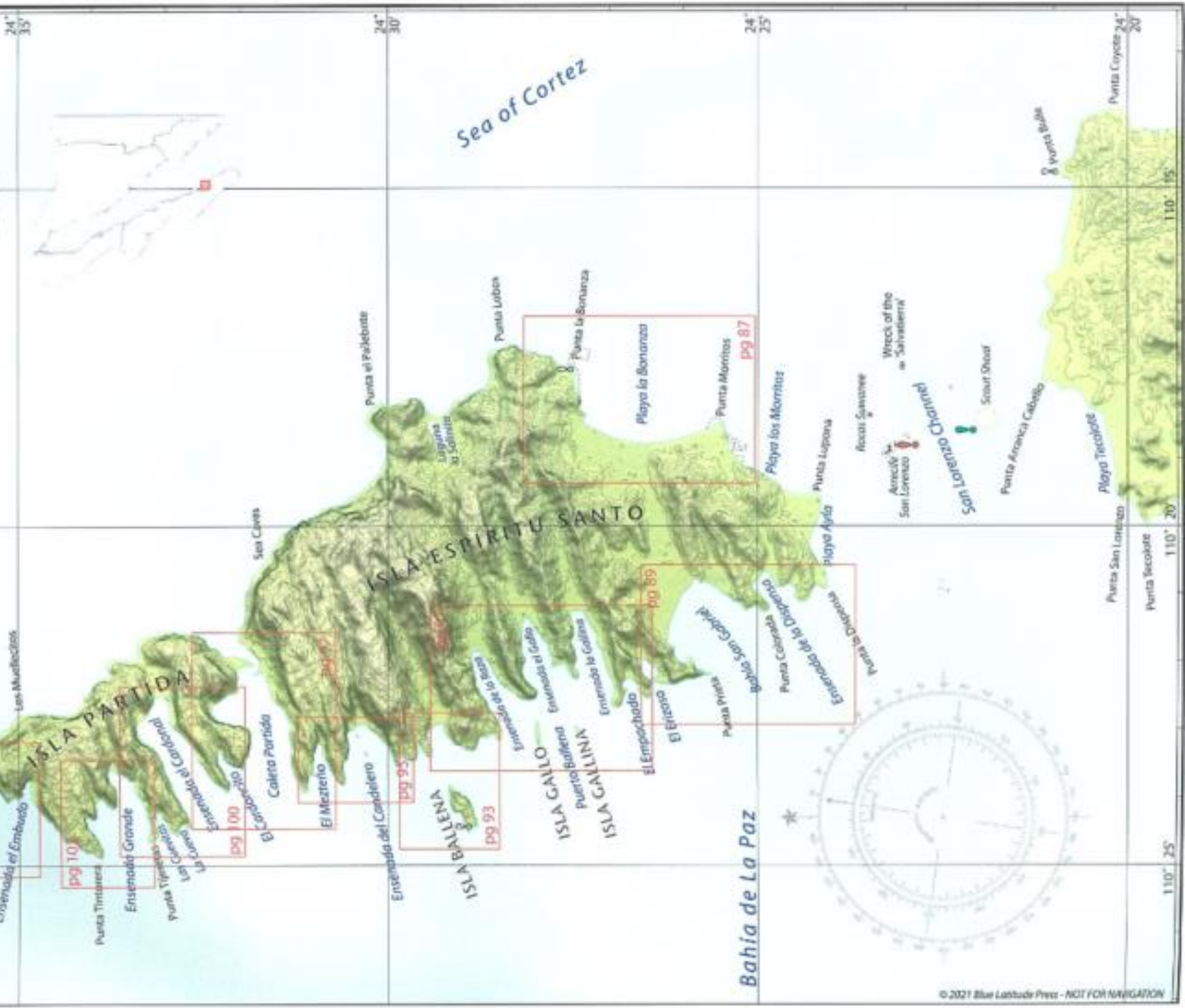


Bahia Amortajada



ISLA ESPÍRITU SANTO and ISLA PARTIDA Overview

2.0 n.m.



Isla Espiritu Santo and Isla Partida

LOS ISLOTES

Depths in feet

.25 n.m.

Sea lion colony

LOS ISLOTES

Small boat moorings (28ft max)

FI(2)W

rky

65

No Anchoring inside line (PROFEPA/SEMARNAT 2015)

BCS191



"El Bajito"



110° 25'

Ensenada el Embudo



Punta Maru

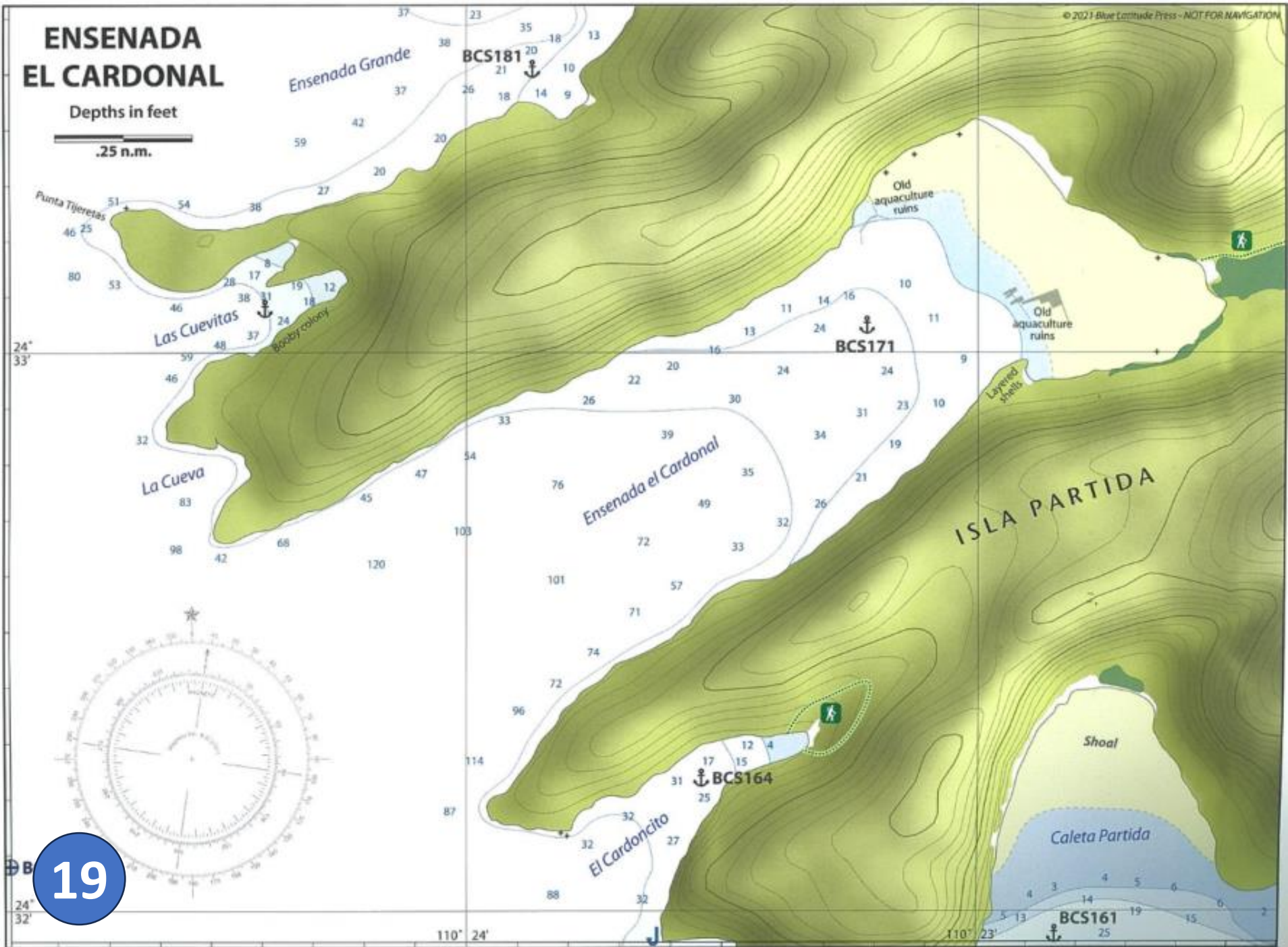
ISLA PARTIDA

110° 24'

24° 36'

24° 35'

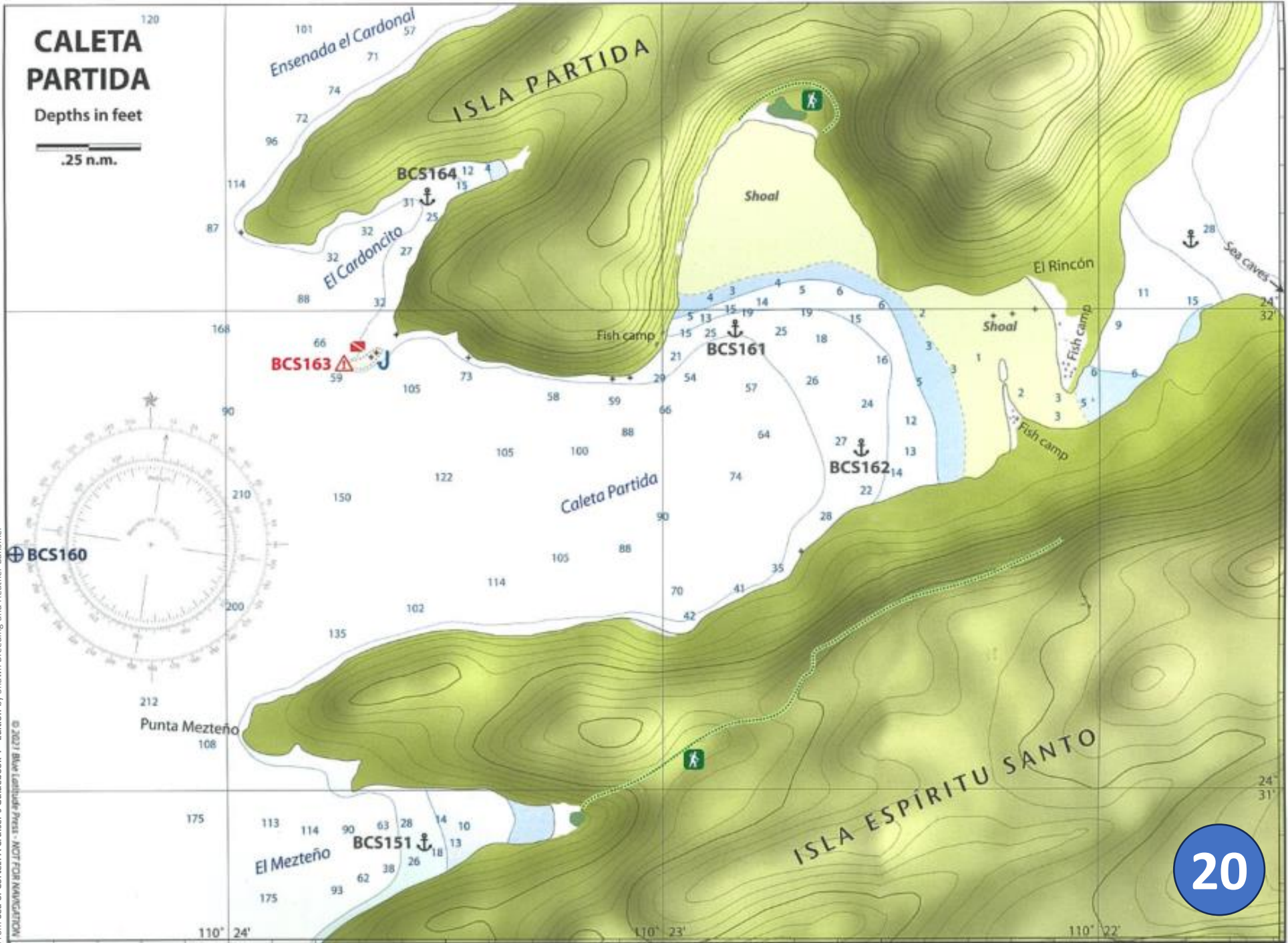
18

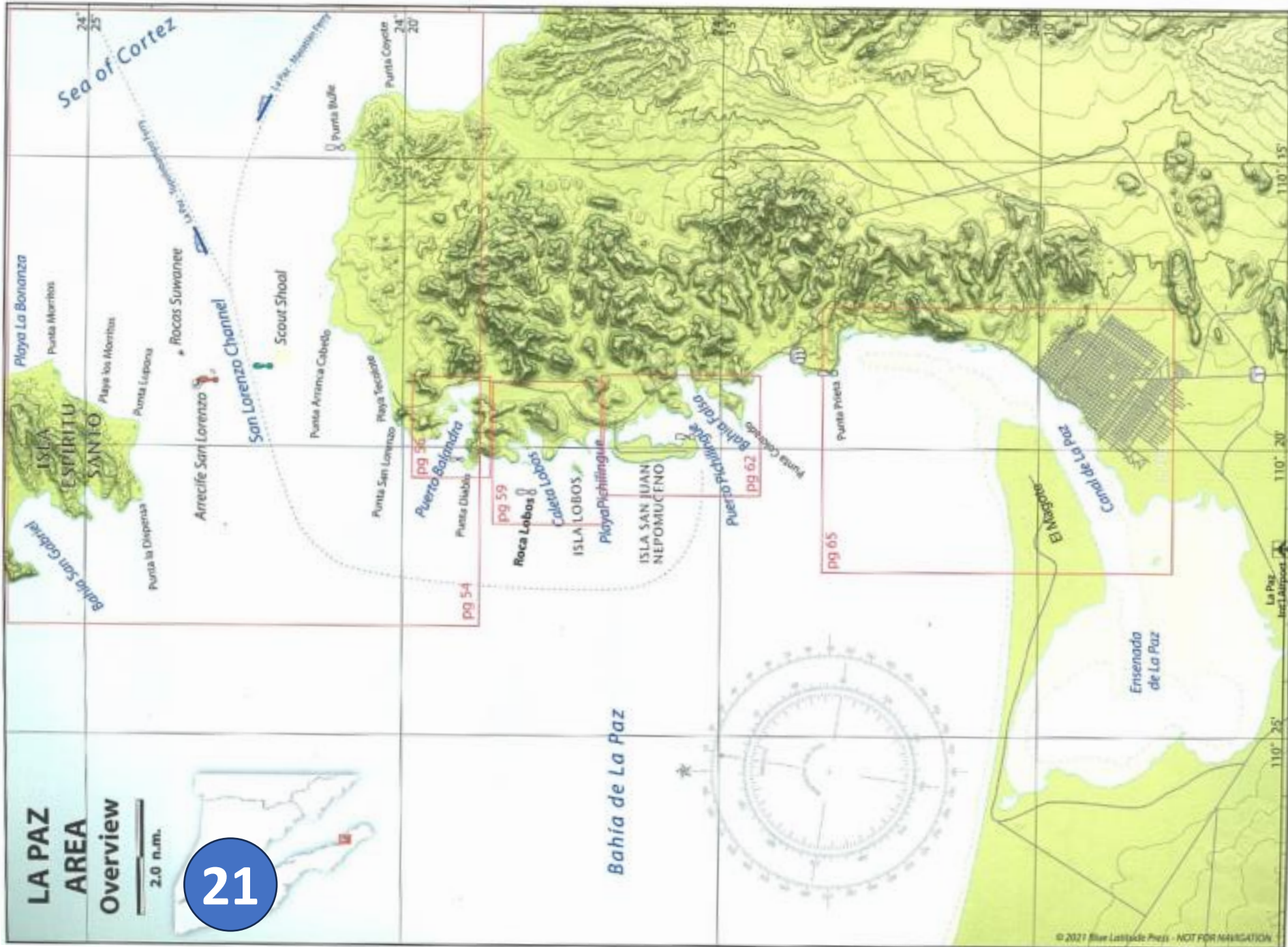


19

Ensenada El Cardonal

From Sea of Cortez: A Cruiser's Guidebook, 4th Edition by Shawn Breeding and Heather Bamsmer





From Sea of Cortez: A Cruiser's Guidebook 4th Edition by Shawn Breeding and Heather Bansmer

La Paz Area Overview

PUERTO BALANDRA

Depths in feet

.25 n.m.

⊕ BCS050
actual waypoint is
100 yds due west

Bahía de La Paz

BCS054

BCS053

BCS051

BCS055

"El Hongo"
(Mushroom rock)

Shoal

To Playa Tecolote (1 mile)

Aquaculture

22

	Cabo San Lucas	San José del Cabo	Bahía Los Frailes	Los Muertos	Puerto Balandra	Bahía Pichilingue	La Paz	Caleta Partida	Ensenada Grande	Isla San Francisco	Bahía Amortajada	San Evaristo	Puerto Los Gatos	Bahía San Marte	Isla Agua Verde	Isla Monserate	Isla Santa Catalina	Bahía Candeleros	Isla Danzante	Puerto Escondido	Loreto	Puerto Ballandra	Bahía Salinas	Isla Coronados	San Juanico	Punta Pulpito	Santo Domingo	Bahía Coyote	Mulegé	Punta Chivato	Isla San Marcos	Santa Rosalia	San Franciscoquito	Isla Partida	Isla Tiburon	Bahía de las Animas	Puerto Refugio	San Luis Gonzaga	San Felipe	Puerto Peñasco	Bahía Kino	Bahía San Pedro	San Carlos	Guaymas	Topolobampo	Altata	
Cabo San Lucas	x	17	45	90	129	135	142	138	142	153	158	162	188	200	205	211	206	220	224	225	236	236	231	241	258	266	301	310	305	310	319	335	407	433	403	440	455	486	523	592	571	398	354	332	327	185	163
San José del Cabo	17	x	28	73	112	118	125	121	125	136	141	145	171	183	188	194	189	203	207	208	219	219	214	224	241	249	284	293	288	293	302	318	390	416	386	423	438	469	506	575	554	381	337	315	310	169	146
Bahía Los Frailes	45	28	x	46	87	93	100	76	97	108	113	117	143	155	160	166	161	175	179	180	191	191	186	196	213	221	256	265	260	265	274	290	362	388	358	395	410	441	478	530	526	353	309	287	282	143	122
Los Muertos	90	73	46	x	45	51	58	51	55	66	71	78	101	118	121	126	121	135	139	140	151	151	146	156	173	181	216	225	220	225	234	250	322	348	318	355	370	401	438	507	486	312	257	248	244	110	126
Puerto Balandra	129	112	84	45	x	6	12	14	16	33	34	35	66	79	83	88	83	98	102	103	113	114	107	119	134	144	179	198	183	188	197	212	284	310	288	315	331	362	400	467	452	283	230	222	220	106	153
Bahía Pichilingue	135	118	93	51	6	x	7	18	21	37	37	40	71	84	88	93	88	103	107	108	118	119	112	124	141	149	184	193	188	193	202	217	289	315	293	320	336	367	405	472	456	288	235	327	225	111	158
La Paz	142	125	100	58	12	7	x	25	27	43	48	51	78	91	95	100	95	110	114	115	125	126	119	131	148	156	191	200	195	200	209	224	296	302	300	327	343	374	412	479	463	295	242	234	232	118	165
Caleta Partida	138	121	76	51	14	18	25	x	4	21	26	30	56	69	73	78	73	88	92	93	103	104	97	109	126	134	169	178	173	178	187	202	274	300	278	305	321	352	390	457	443	275	222	214	212	102	160
Ensenada Grande	142	125	97	55	16	21	27	4	x	19	23	28	53	66	70	75	70	85	89	90	100	101	94	106	123	131	166	175	170	175	184	199	271	297	275	302	318	349	387	454	440	272	214	205	203	99	158
Isla San Francisco	153	136	108	66	33	36	43	21	19	x	5	9	36	49	52	57	51	67	71	72	82	83	76	88	105	113	148	157	152	157	166	181	253	279	257	284	300	331	369	436	423	253	199	191	189	96	165
Bahía Amortajada	158	141	113	71	34	37	48	26	23	5	x	7	33	45	48	53	47	63	67	68	78	79	72	84	101	109	149	153	148	153	162	177	249	275	253	280	296	327	365	432	421	251	197	189	187	97	168
San Evaristo	162	145	117	78	35	40	51	30	28	9	7	x	28	41	44	55	42	59	63	65	75	76	69	80	100	107	142	151	146	150	159	173	245	273	248	279	295	322	362	432	416	244	191	184	182	102	173
Puerto Los Gatos	188	171	143	101	66	71	78	56	53	36	33	28	x	14	18	29	20	32	38	39	48	49	43	53	74	80	116	125	119	124	133	147	220	247	222	253	269	297	336	406	390	219	165	159	157	106	191
Bahía San Marte	200	183	155	118	79	84	91	69	66	49	45	41	14	x	7	15	15	22	25	23	33	33	32	41	62	69	104	113	108	113	122	137	209	236	211	241	258	286	326	394	380	208	156	149	151	110	198
Bahía Agua Verde	205	188	160	121	83	88	95	73	70	52	48	44	18	7	x	12	18	22	22	23	33	33	29	38	61	68	103	112	107	111	120	135	207	235	209	239	256	284	324	393	378	205	153	145	146	112	202
Isla Monserate	211	194	166	126	88	93	100	78	75	57	53	55	29	15	12	x	17	11	15	17	25	25	18	30	49	56	91	100	95	99	108	123	195	223	197	228	244	272	312	380	366	195	141	134	132	111	202
Isla Santa Catalina	206	189	161	121	83	88	95	73	70	51	47	42	20	15	18	17	x	27	31	35	42	42	30	47	60	66	101	111	105	110	119	133	205	233	208	238	254	282	322	390	376	204	150	142	140	96	188
Bahía Candeleros	220	203	175	135	98	103	110	88	88	67	63	59	32	22	17	11	27	x	5	7	18	19	18	23	42	50	85	94	88	93	102	117	189	217	193	222	238	266	306	376	361	190	140	134	136	123	214
Isla Danzante	224	207	179	139	102	107	114	92	89	71	67	63	38	25	22	15	31	5	x	4	13	15	17	18	37	46	81	90	84	89	97	112	184	212	188	217	233	261	301	371	356	185	135	126	128	124	219
Puerto Escondido	225	208	180	140	103	108	115	93	90	72	68	65	39	31	23	17	35	7	4	x	14	16	20	20	38	47	82	91	85	90	98	113	185	213	189	218	234	263	302	373	358	187	137	131	130	130	221
Loreto	236	219	191	151	114	119	126	104	101	83	78	75	48	37	33	25	42	18	14	x	10	10	27	6	26	34	69	78	72	77	86	101	173	201	177	206	222	250	290	360	345	174	124	119	118	133	230
Puerto Ballandra	236	219	191	151	114	119	126	104	101	83	78	76	49	38	33	25	42	19	15	16	10	x	20	8	26	34	69	78	72	77	86	101	173	201	177	206	222	250	290	360	344	174	122	117	116	126	223
Bahía Salinas	231	214	186	146	107	112	119	97	94	76	72	69	43	32	29	18	30	18	17	20	27	20	x	22	37	44	79	88	82	87	96	111	183	210	185	216	232	260	300	370	354	182	130	123	122	118	214
Isla Coronados	241	224	196	156	119	124	131	109	106	88	84	80	53	41	38	30	47	23	18	20	6	8	22	x	20	28	63	72	66	71	80	95	167	194	171	200	216	244	284	354	340	168	118	112	112	129	226
San Juanico	258	241	213	173	136	141	148	126	123	105	101	100	74	62	61	49	60	42	37	38	26	26	37	20	x	10	45	54	48	53	62	77	149	176	153	182	198	226	266	334	320	150	102	98	98	142	240
Punta Pulpito	266	249	221	181	144	149	156	134	131	113	109	107	80	69	68	56	66	50	46	47	34	34	44	28	10	x	36	45	39	44	53	68	140	167	144	173	189	217	257	325	311	142	93	89	91	147	246
Santo Domingo	301	284	256	216	179	184	191	169	166	148	144	142	116	104	103	91	101	85	81	82	69	69	79	63	45	36	x	9	6	13	23	38	111	138	118	144	160	189	227	296	282	118	78	78	84	179	279
Bahía Coyote	310	293	265	225	188	193	200	178	175	157	153	151	125	113	112	100	111	94	90	91	78	78	88	72	54	45	9	x	14	22	32	46	120	146	126	153	168	198	236	305	291	126	87	87	93	188	288
Mulegé	305	288	260	220	183	188	195	173	170	152	148	146	119	108	107	95	105	88	84	85	72																										



cruisingclub.org/event/sea-cortez-international-cruise